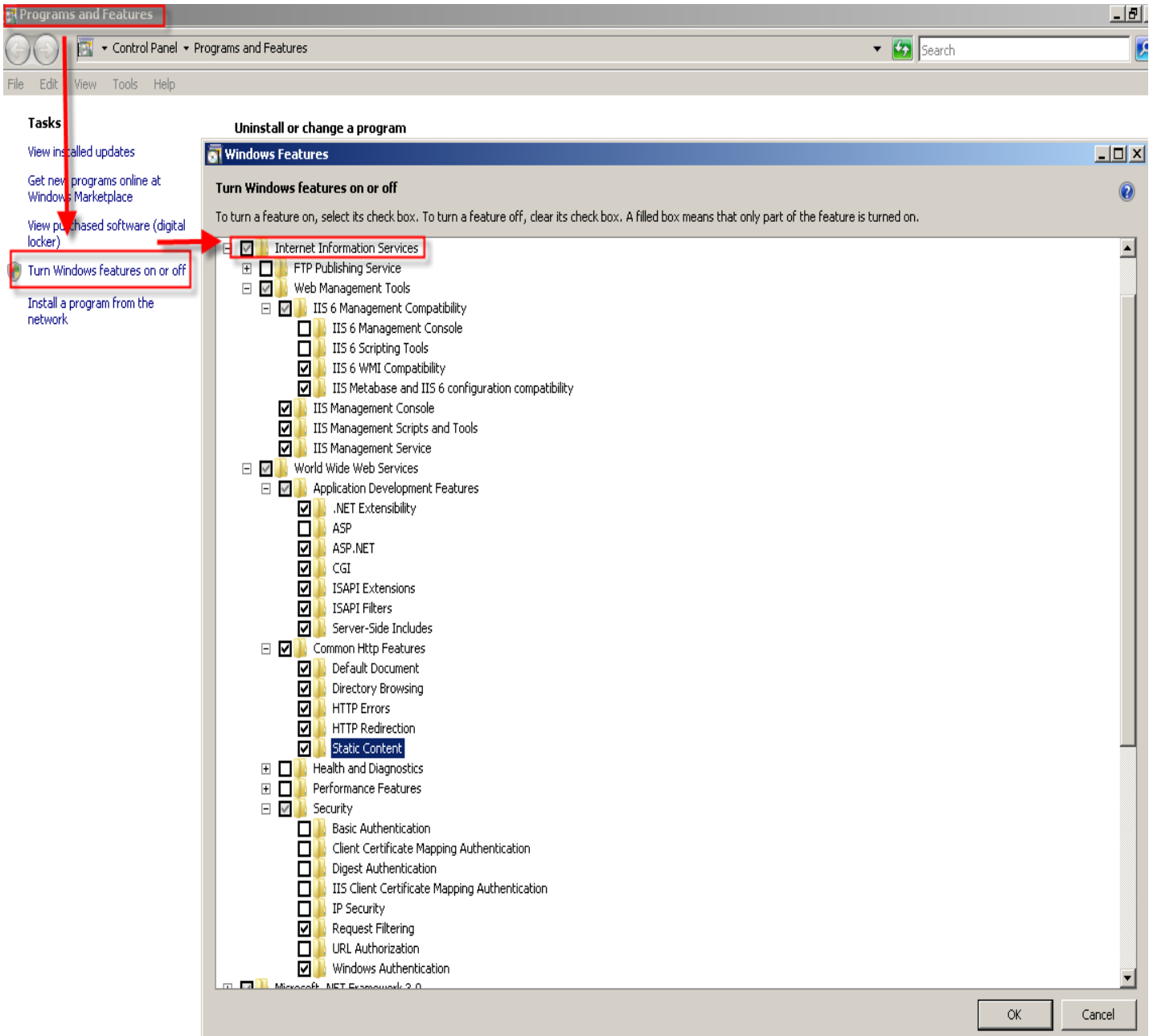


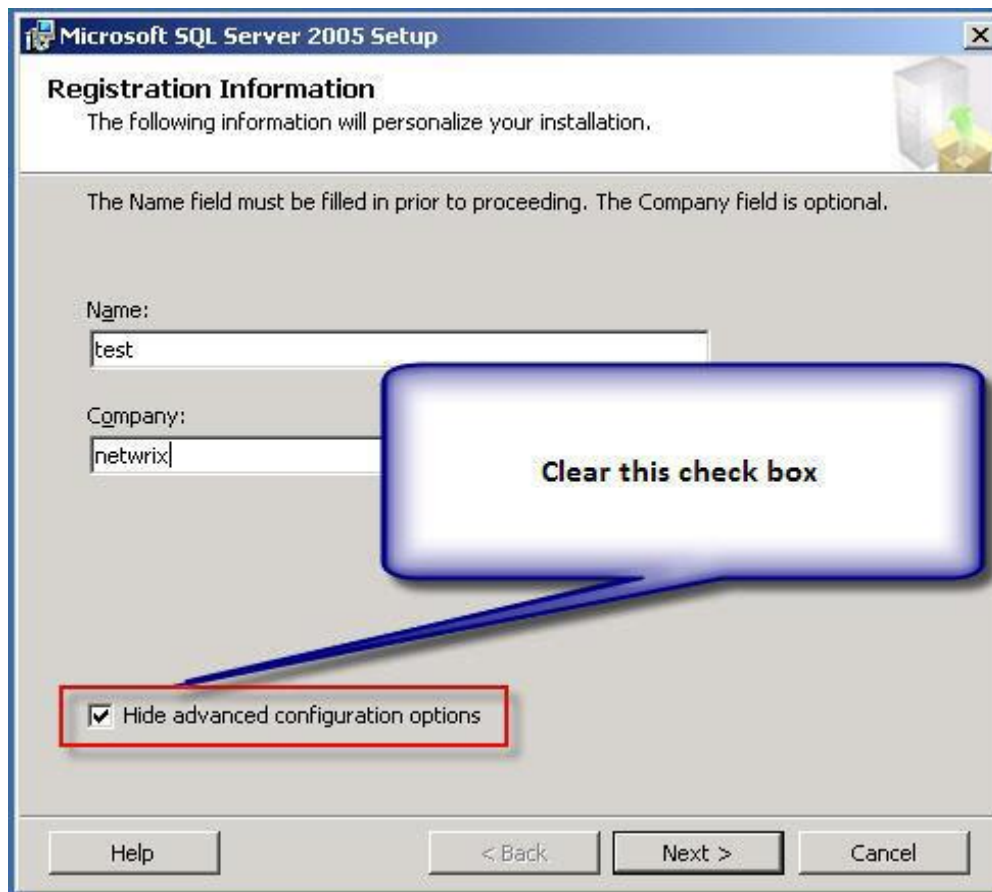
Installation of SQL 2005 Express with Advanced Services on Windows Vista

Default values should be kept for all installation parameters. The SRS service is started under the Local System account.

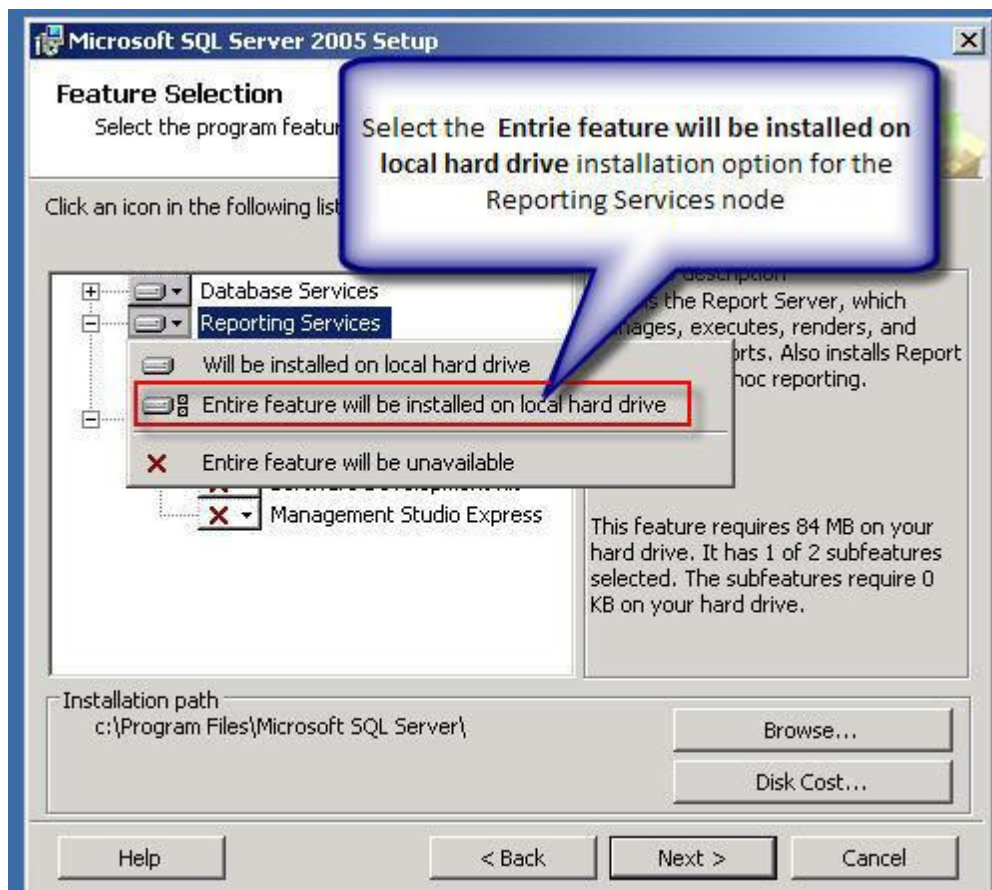
This is the IIS 7 configuration required for the SRS server to operate normally:



During SQL Server setup, perform the following actions on the installation wizard steps:

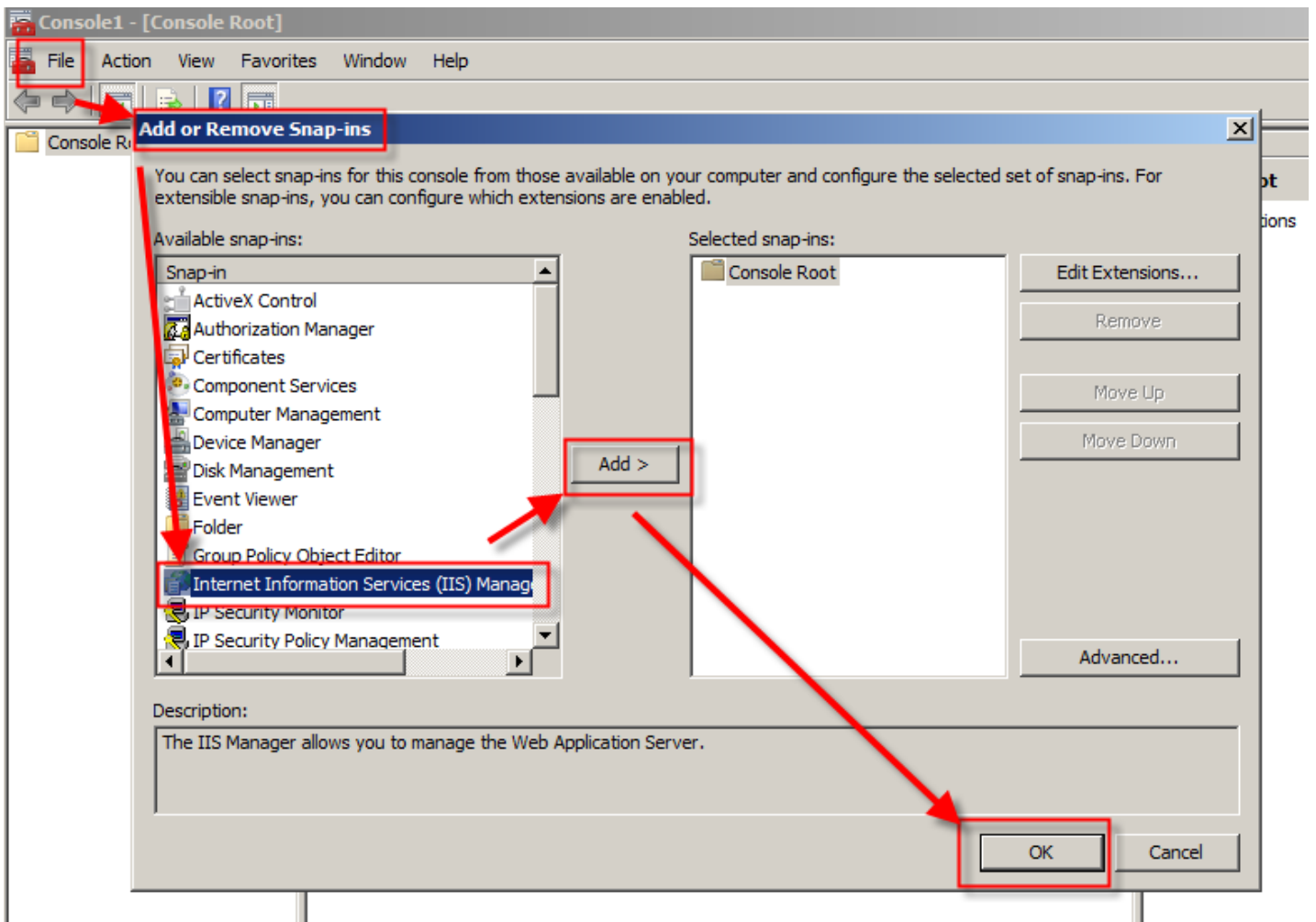


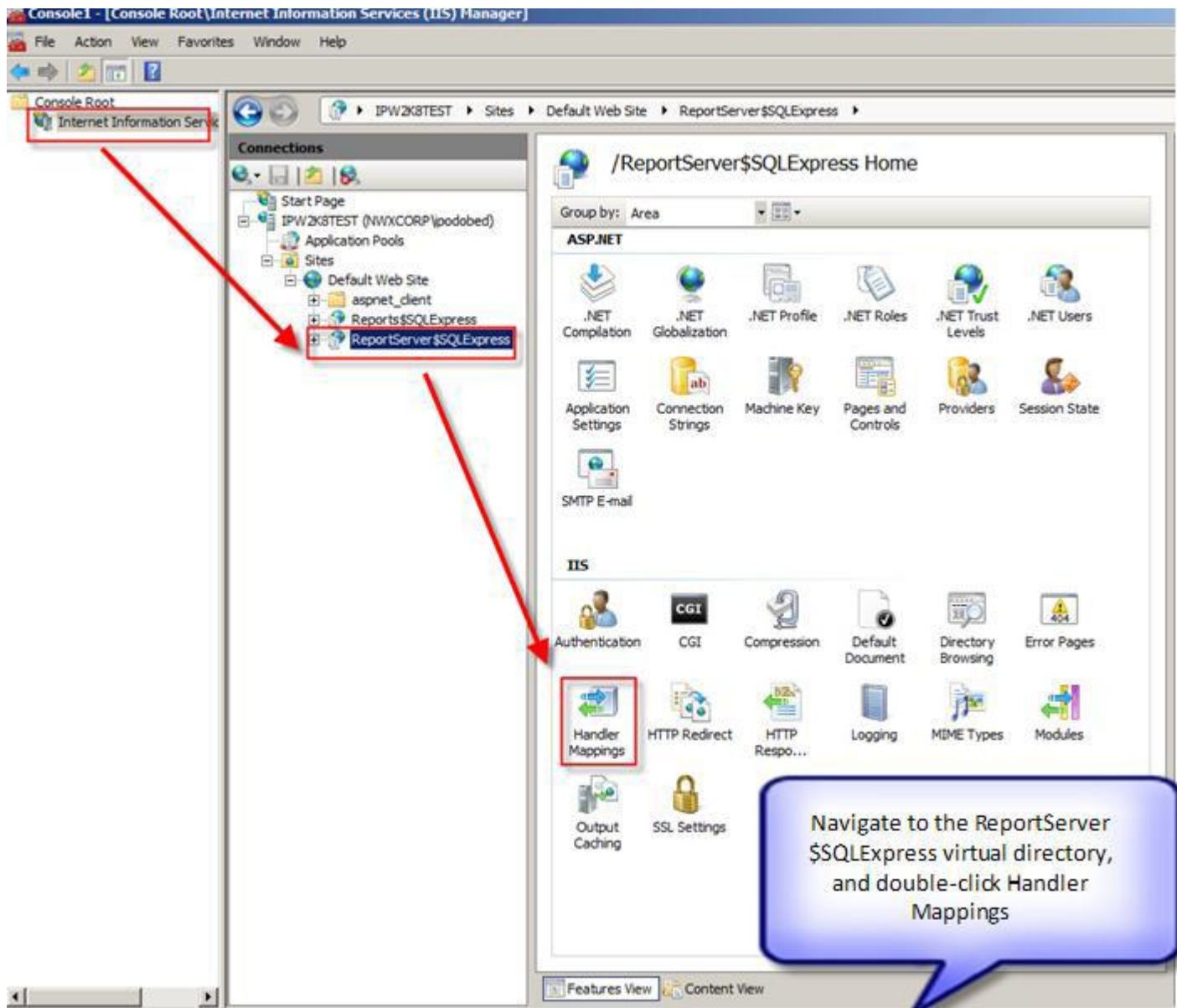
Important: On the Feature Selection step, select the **Entrie feature will be installed on local hard drive** option for the Services node.

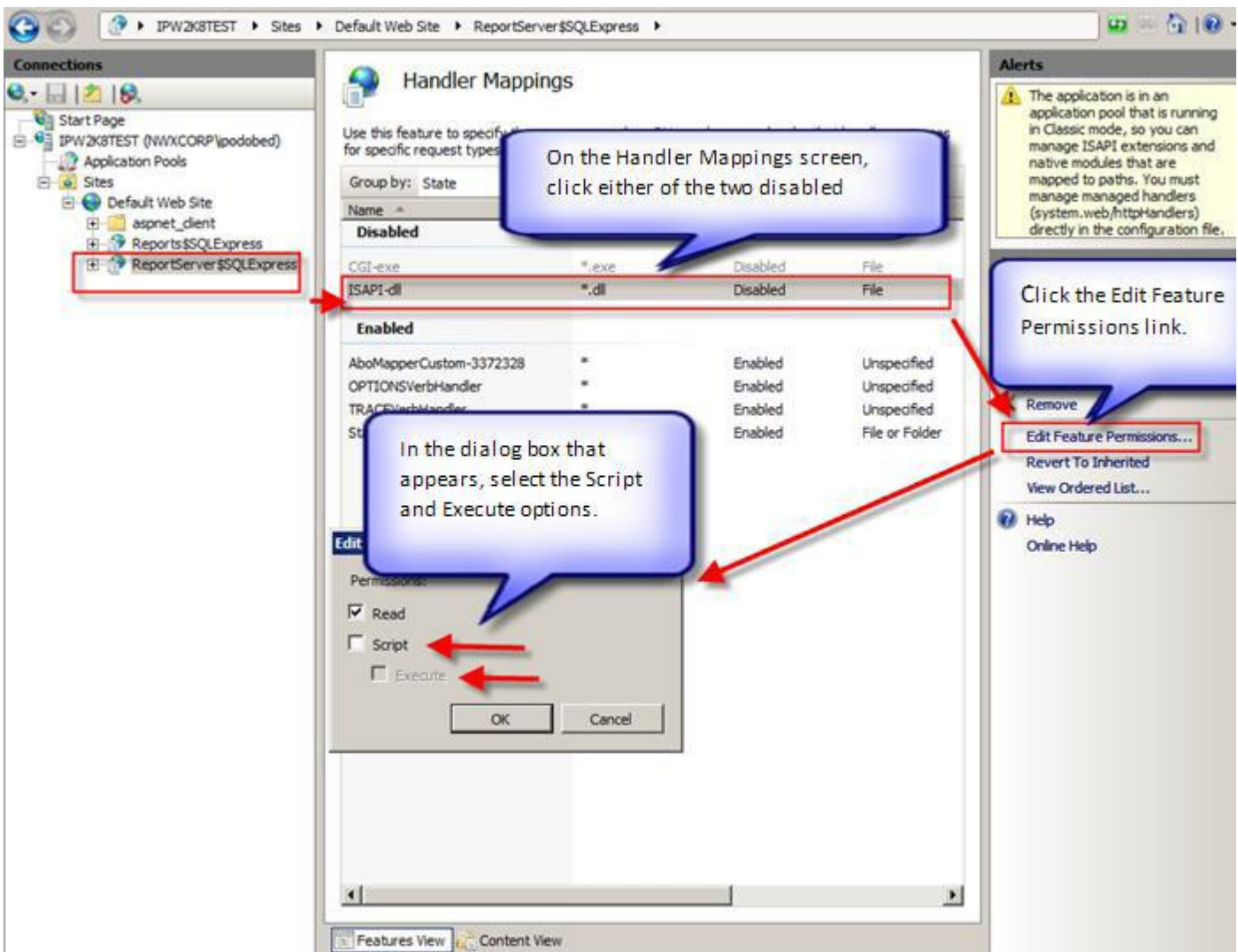


After SQL Server installation, enable script execution in IIS. For that, use the IIS snap-in:

- 1) From the Start menu, select Run and launch mmc.
- 2) In the MMC main menu, click File | Add/Remove Snap-in.
- 3) In the snap-in selection dialog box that opens, select Internet Information Services (IIS) Manager and click Add, then click OK.







After that, you must restart IIS. For that, enter the IISRESET command at the command prompt.