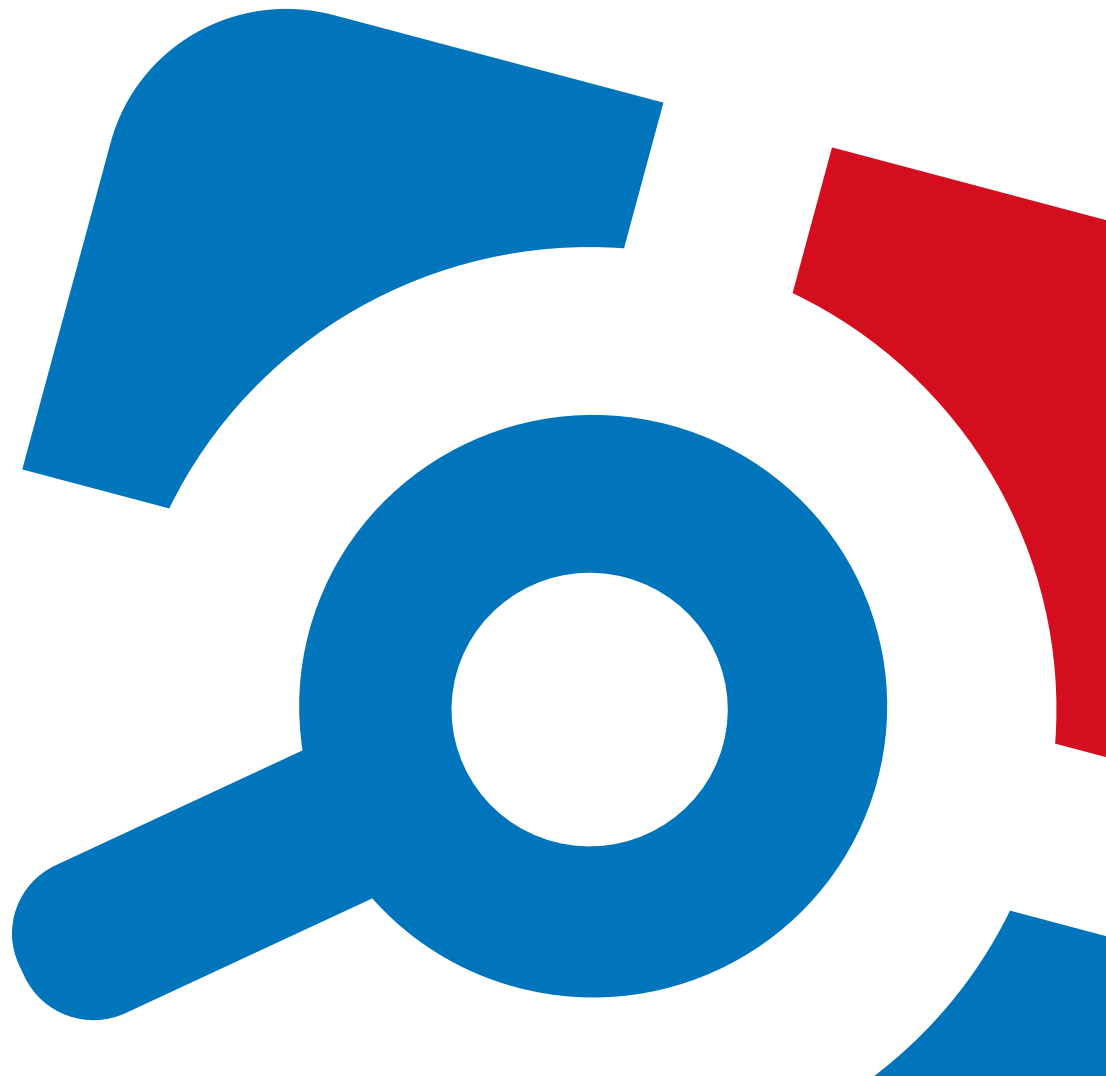


Netwrix Auditor for Active Directory Federation Services Quick-Start Guide

Version: 9.9
11/14/2019



Legal Notice

The information in this publication is furnished for information use only, and does not constitute a commitment from Netwrix Corporation of any features or functions, as this publication may describe features or functionality not applicable to the product release or version you are using. Netwrix makes no representations or warranties about the Software beyond what is provided in the License Agreement. Netwrix Corporation assumes no responsibility or liability for the accuracy of the information presented, which is subject to change without notice. If you believe there is an error in this publication, please report it to us in writing.

Netwrix is a registered trademark of Netwrix Corporation. The Netwrix logo and all other Netwrix product or service names and slogans are registered trademarks or trademarks of Netwrix Corporation. Microsoft, Active Directory, Exchange, Exchange Online, Office 365, SharePoint, SQL Server, Windows, and Windows Server are either registered trademarks or trademarks of Microsoft Corporation in the United States and/or other countries. All other trademarks and registered trademarks are property of their respective owners.

Disclaimers

This document may contain information regarding the use and installation of non-Netwrix products. Please note that this information is provided as a courtesy to assist you. While Netwrix tries to ensure that this information accurately reflects the information provided by the supplier, please refer to the materials provided with any non-Netwrix product and contact the supplier for confirmation. Netwrix Corporation assumes no responsibility or liability for incorrect or incomplete information provided about non-Netwrix products.

© 2019 Netwrix Corporation.

All rights reserved.

Table of Contents

1. Introduction	4
1.1. Netwrix Auditor Features and Benefits	4
2. Prerequisites and System Requirements	5
2.1. Supported Data Sources	5
2.2. Requirements to Install Netwrix Auditor	5
2.2.1. Hardware Requirements	5
2.2.2. Software Requirements	6
3. Review Components Checklist	8
4. Install the Product	9
5. Monitoring Plans	11
5.1. Create a New Plan	11
5.1.1. Settings for Data Collection	11
5.1.2. Default SQL Server Instance	12
5.1.3. Database Settings	13
5.1.4. SMTP Server Settings	14
5.1.5. Email Notification Recipients	15
5.1.6. Monitoring Plan Summary	15
5.2. Add Items for Monitoring	15
5.2.1. Federation Server	15
6. Make Test Changes	17
7. See How Netwrix Auditor Enables Complete Visibility	18
7.1. Review an Activity Summary	18
7.2. Review Overview Dashboard	19
7.3. Review the All Changes Report	20
7.4. Browse Data with Intelligence Search	21
8. Related Documentation	24

1. Introduction

This guide is intended for the first-time users of Netwrix Auditor for Active Directory Federation Services. It can be used for evaluation purposes, therefore, it is recommended to read it sequentially, and follow the instructions in the order they are provided. After reading this guide you will be able to:

- Install and configure Netwrix Auditor
- Create a monitoring plan to start auditing
- Launch data collection
- See how Netwrix Auditor enables complete visibility

NOTE: This guide only covers the basic configuration and usage options for auditing with Netwrix Auditor. For advanced installation scenarios and configuration options, as well as for information on various reporting possibilities and other product features, refer to [Netwrix Online Help Center](#).

1.1. Netwrix Auditor Features and Benefits

Netwrix Auditor is a visibility platform for user behavior analysis and risk mitigation that enables control over changes, configurations and access in hybrid IT environments to protect data regardless of its location. The platform provides security analytics to detect anomalies in user behavior and investigate threat patterns before a data breach occurs.

Netwrix Auditor includes applications for Active Directory, Active Directory Federation Services, Azure AD, Exchange, Office 365, Windows file servers, EMC storage devices, NetApp filer appliances, Nutanix Files, network devices, SharePoint, Oracle Database, SQL Server, VMware, Windows Server, and User Activity. Empowered with a RESTful API, the platform delivers visibility and control across all of your on-premises or cloud-based IT systems in a unified way.

Major benefits:

- Detect insider threats—on premises and in the cloud
- Pass compliance audits with less effort and expense
- Increase productivity of IT security and operations teams

To learn how Netwrix Auditor can help you achieve your specific business objectives, refer to [Netwrix Auditor Best Practices Guide](#).

2. Prerequisites and System Requirements

This section lists the requirements for the systems that are going to be audited with Netwrix Auditor, and for the computer where the product is going to be installed.

To learn about Netwrix Auditor licenses, refer to the following Netwrix Knowledge Base article: [Netwrix Auditor Licensing FAQs](#). To learn how to install a license, refer to [Licenses](#).

To learn about ports and protocols required for product operation, refer to [Protocols and Ports Required for Netwrix Auditor](#).

To learn about security roles and permissions required for product operation, refer to [Configure Netwrix Auditor Service Accounts](#).

2.1. Supported Data Sources

The table below lists systems that can be monitored with Netwrix Auditor for Active Directory Federation Services:

Data source	Supported Versions
Active Directory Federation Services	<ul style="list-style-type: none">• AD FS 5.0 - Windows Server 2019• AD FS 4.0 - Windows Server 2016• AD FS 3.0 - Windows Server 2012 R2

2.2. Requirements to Install Netwrix Auditor

This section provides the requirements for the computer where Netwrix Auditor is going to be installed. Refer to the following sections for detailed information:

- [Hardware Requirements](#)
- [Software Requirements](#)

2.2.1. Hardware Requirements

This section provides rough estimations of the resources required for Netwrix Auditor PoC or evaluation deployment. Consider that actual hardware requirements will depend on your monitored infrastructure, the number of users in your environment, and activities that occur in the infrastructure per day.

The metrics provided in this section are valid for clean installation on a server without any additional roles or third part applications installed on it. The use of virtual machine is recommended.

Below you can find rough estimations, calculated for evaluation of Netwrix Auditor for Active Directory Federation Services. Refer to [Netwrix Online Help Center](#) for complete information on the Netwrix Auditor hardware requirements.

You can deploy Netwrix Auditor on a virtual machine running Microsoft Windows guest OS on the corresponding virtualization platform, in particular:

- VMware vSphere
- Microsoft Hyper-V
- Nutanix AHV

Note that Netwrix Auditor supports only Windows OS versions listed in the [Software Requirements](#) section.

Hardware component Starter, evaluation, or small environment	
Processor	2 cores
RAM	4 GB
Disk space	100 GB—System drive
	100 GB—Data drive (Long-Term Archive and SQL Server)
Screen resolution	Minimum 1280 x 1024
	Recommended 1920 x 1080 or higher

2.2.2. Software Requirements

The table below lists the software requirements for the Netwrix Auditor installation:

Component	Requirements
Operating system	Windows Server OS: <ul style="list-style-type: none">• Windows Server 2019• Windows Server 2016• Windows Server 2012 R2• Windows Server 2012• Windows Server 2008 R2 SP1

Component	Requirements
	Windows Desktop OS (64-bit): <ul style="list-style-type: none">• Windows 10• Windows 8.1• Windows 7 SP1
.NET Framework	<ul style="list-style-type: none">• .NET Framework 4.5 and above.
Installer	<ul style="list-style-type: none">• Windows Installer 3.1 and above

3. Review Components Checklist

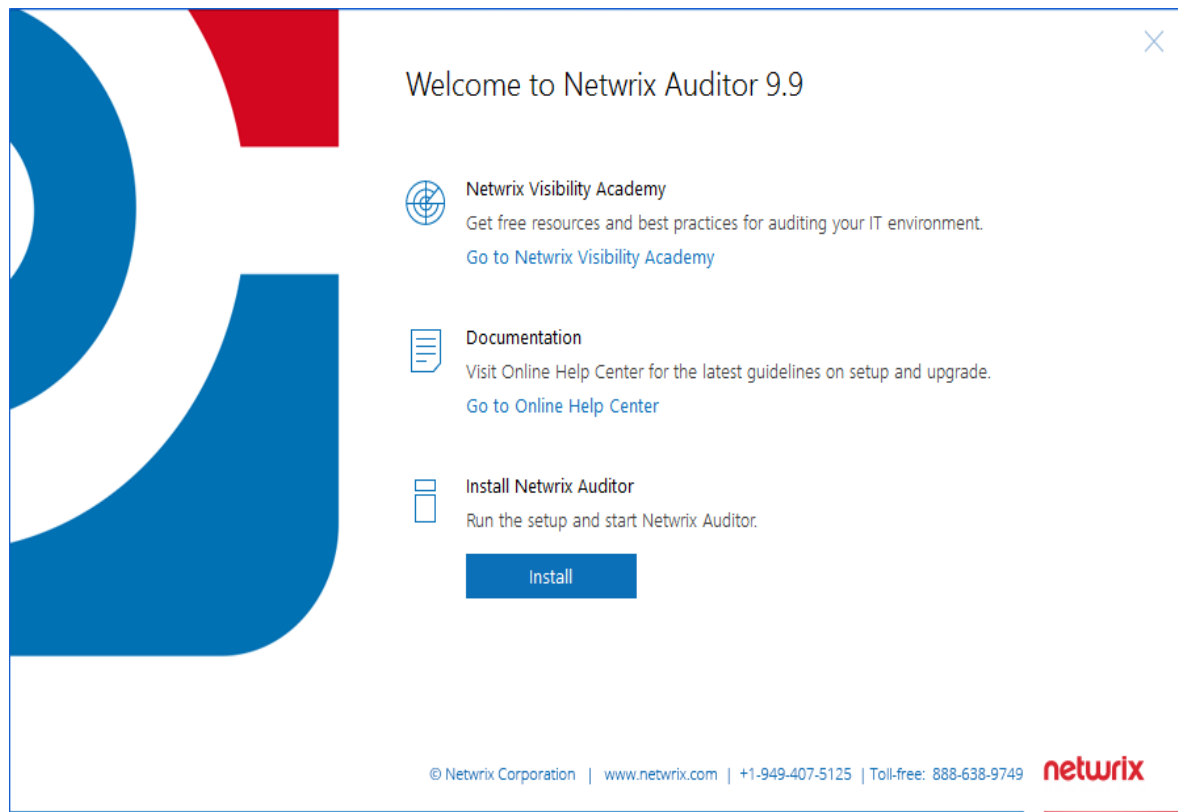
To speed up the evaluation process, Netwrix recommends you to ensure that the following services and components are up and running prior to the Netwrix Auditor installation.

Service or component	Recommendations
SQL Server with Reporting Services (or Advanced Services) 2008 or higher.	<p>Supported SQL Server versions are listed here.</p> <p>Consider maximum database size in different versions. Make your choice based on the size of the environment you are going to monitor, the number of users, and other factors. Remember that maximum database size in Express editions may be insufficient.</p> <p>NOTE: Although Netwrix Auditor provides a convenient way to download SQL Server 2014 Express edition right from the product, it is recommended to deploy SQL Server instance in advance.</p> <p>If installed separately, remember to test SQL Server connectivity.</p>
Test account	<p>Netwrix recommends you to create a special account with extensive privileges. This account should have sufficient permissions to:</p> <ul style="list-style-type: none">• Collect audit data. See Configure Data Collecting Account for more information.• Access data stored in the SQL Server instance:<ul style="list-style-type: none">• The account must be assigned the Database owner (db_owner) role and the dbcreator server role.• The account must be assigned the Content Manager role on the SSRS Home folder.• Make test changes in your environment.

4. Install the Product

To install Netwrix Auditor

1. Download Netwrix Auditor 9.9 from [Netwrix website](#).
2. Unpack the installation package. The following window will be displayed on successful operation completion:

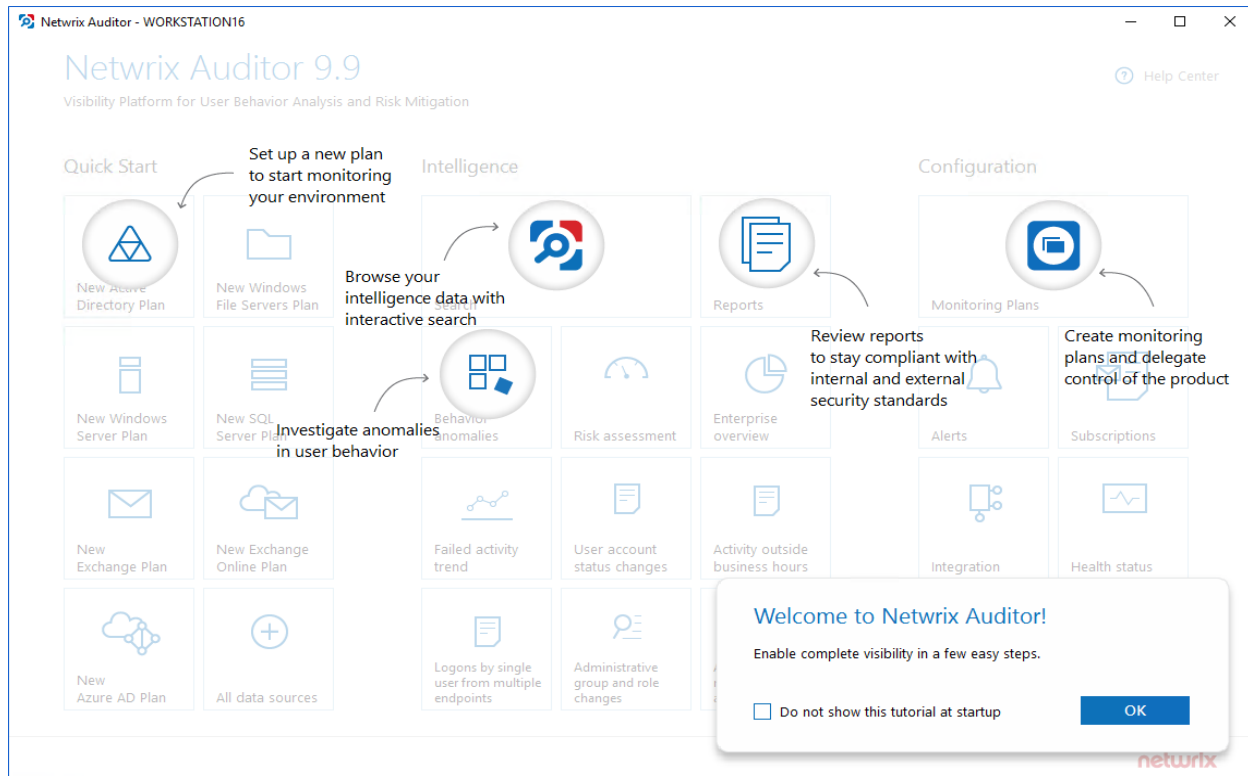


3. Follow the instructions of the setup wizard. When prompted, accept the license agreement.
4. On the **Select Installation Type** step, select **Full installation**.
5. On the **Destination Folder** step, specify the installation folder.
6. On the **Netwrix Customer Experience Program** step, you are invited to take part in the Netwrix Customer Experience Program. It is optional on your part to help Netwrix improve the quality, reliability, and performance of Netwrix products and services. If you accept, Netwrix collects statistical information on how the Licensee uses the product in accordance with applicable law. Select **Skip** if you do not want to participate in the program.

NOTE: You can always opt-out of the Netwrix Customer Experience Program later. See [Netwrix Online Helpcenter](#) for instructions on how to cancel participation in the program.

7. Click **Install**.

After a successful installation, Netwrix Auditor shortcut will be added to the **Start** menu/screen and the product will start.



5. Monitoring Plans

To start auditing your environment and analyzing user behavior with Netwrix Auditor, create a monitoring plan. All your monitoring plans are listed in the **Monitoring Plans** section.

A monitoring plan defines your data sources and general data collection, notification, and storage settings. To start collecting data, choose a data source, such as , and add items to its scope. Item is a specific object you want to audit. All data sources and items in your plan share common settings so that you can supervise and manage several data collections as one.

On a high level, you should perform the following steps to start monitoring your environment:

1. Specify a data source and create a monitoring plan with a wizard. See [Create a New Plan](#) for more information.
2. Add items for monitoring. Netwrix Auditor does not collect data until you specify an item. See [Add Items for Monitoring](#) for more information.

5.1. Create a New Plan

On the main Netwrix Auditor page, click the tile in the **Quick Start** section.

Then follow the steps of the Monitoring Plan Wizard:

- Specify an account for collecting data
- Specify default SQL Server instance and configure the Audit Database to store your data
- Configure notification settings
- Specify the recipients who will receive daily activity summaries
- Specify a plan name

5.1.1. Settings for Data Collection

At this step of the wizard, specify the account that Netwrix Auditor will use to access the data source, and general settings for data collection.

Option	Description
Specify the account for collecting data	<p>Provide a user name and a password for the account that Netwrix Auditor will use to collect data. By default, the user name is prepopulated with your account name.</p> <p>Make sure the account has sufficient permissions to collect data. For a full list of the rights and permissions, and instructions on how to configure them, refer to Configure Data Collecting Account. Netwrix recommends creating a</p>

Option	Description
	special service account with extended permissions.

5.1.2. Default SQL Server Instance

To provide searching, alerting and reporting capabilities, Netwrix Auditor needs an SQL Server where audit data will be stored in the databases. To store data from the data sources included in the monitoring plan, the wizard creates an Audit Database for each plan. At this step, you should specify the default SQL Server instance that will host Netwrix Auditor databases. To read more, refer to [SQL Server and Audit Database](#).

NOTE: Alternatively, you can instruct Netwrix Auditor not to store data to the databases but only to the repository (Long-Term Archive) – in this scenario, you will only be able to receive activity summaries. Reporting and alerting capabilities will not be provided.

NOTE: Make sure the **Disable security intelligence and make data available only in activity summaries** checkbox is cleared.

Select one of the following options:

- **Install a new instance of Microsoft SQL Server Express automatically** — this option is available at the first run of the wizard. It allows you to deploy SQL Server 2016 SP2 Express with Advanced Services on the local machine. This SQL Server will be used as default host for Netwrix Auditor databases.
- **Use an existing SQL Server instance** — select this option to use an existing SQL Server instance.

NOTE: Local SQL Server instance is detected automatically, and input fields are pre-populated with its settings.

Complete the following fields:

Option	Description
SQL Server instance	Specify the name of the SQL Server instance to store audit data.
Authentication	Select the authentication type you want to use to connect to the SQL Server instance: <ul style="list-style-type: none"> • Windows authentication • SQL Server authentication
User name	Specify the account to be used to connect to the SQL Server instance.

Option	Description
<p>NOTE: This account must be granted the database owner (db_owner) role and the dbcreator server role. See Configure Audit Database Account for more information.</p>	
Password	Enter a password.

5.1.3. Database Settings

At this step, you need to specify a database where Netwrix Auditor will store data collected from the data sources included in this monitoring plan.

NOTE: It is strongly recommended to target each monitoring plan at a separate database.

Make sure the **Disable security intelligence and make data available only in activity summaries** checkbox is cleared and **Use default SQL Server settings** is checked.

Audit Database

Specify the database to store your data and configure settings.

☐ Disable security intelligence and make data available only in activity summaries

Database:

☐ Use default SQL Server settings

☒ Specify custom connection parameters

Authentication:

User name:

Password:

Configure the following:

Setting	Description
Disable security intelligence ...	<p>Only select this option if you do not want your data to be stored in the database. In this case, you will only be able to receive activity summaries. Reporting and alerting capabilities will not be provided.</p> <p>To store data to the database, leave this check box cleared.</p>
Database	<p>Default database name is <i>Netwrix_Auditor_<monitoring_plan_name></i>.</p> <p>It is recommended that you enter a meaningful name for the database here. It may include the data source type (e.g. <i>Exchange_Audit_Data</i> or <i>OracleSrv02_Audit_Data</i>), or so.</p> <p>If you decided to use the existing SQL Server instance instead of dedicated, you may want to use <i>Netwrix_Auditor</i> prefix to distinguish Netwrix Auditor databases from others.</p>
Use default SQL Server settings	Select this option if you want Netwrix Auditor to connect to the SQL Server instance using the default settings you specified Default SQL Server Instance .
Specify custom connection parameters	<p>Select this option to use custom credentials when connecting to SQL Server. Specify authentication method and the account that Netwrix Auditor will use.</p> <p>Make sure this account has sufficient rights to connect to SQL Server and work with the databases. See Configure Audit Database Account for details.</p>

Netwrix Auditor will connect to the default SQL Server instance and create a database with the specified name on it.

NOTE: Global settings that apply to all databases with audit data (including retention period and SSRS server used for reporting) are available on the **Audit Database** page of Netwrix Auditor settings. See [Audit Database](#) for details.

5.1.4. SMTP Server Settings

When you create the first monitoring plan, you are prompted to specify the email settings that will be used for activity and health summaries, reports and alerts delivery. For the monitoring plans that follow, Netwrix

Auditor will automatically detect SMTP settings; however, for your first plan you should provide them manually. See [this section](#) for details.

5.1.5. Email Notification Recipients

Specify who will receive daily emails: [Activity Summary Email](#) on changes in the monitored infrastructure, and [Health Summary Email](#) on Netwrix Auditor operations and health.

Click **Add Recipient** and enter your email.

NOTE: It is recommended to click . The system will send a test message to the specified email address and inform you if any problems are detected.

5.1.6. Monitoring Plan Summary

At this step of the wizard, to provide a meaningful name and optional description for your monitoring plan.

To start collecting data, you should specify the objects (items) that belong to the target data source and should be processed according to the settings of this monitoring plan. For example, for Exchange data source the item will be your Exchange server, for Windows Server data source - computer, IP range or AD container, and so on. To add items right after finishing the monitoring plan wizard, select the **Add item now** checkbox. See [Add Items for Monitoring](#) for details.

5.2. Add Items for Monitoring

Once you completed monitoring plan wizard and specified data sources, add items for monitoring.

Each data source has a dedicated item type. Netwrix Auditor automatically suggests item types associated with your data source.

5.2.1. Federation Server

NOTE: If you are going to audit an entire AD FS farm, consider adding all AD FS server one by one as items to your monitoring plan. Otherwise, your audit scope may contain warnings, errors or incomplete data.

Complete the following fields:

Option	Description
Specify AD FS federation server	Provide a server name by entering its FQDN, NETBIOS or IPv4 address. You can click Browse to select a computer from the list of computers in your network.

Option	Description
Specify the account for collecting data	Select the account that will be used to collect data for this item.

6. Make Test Changes

Now that the product has collected a snapshot of the data source's current configuration state, you can make test changes to see how they will be reported by Netwrix Auditor.

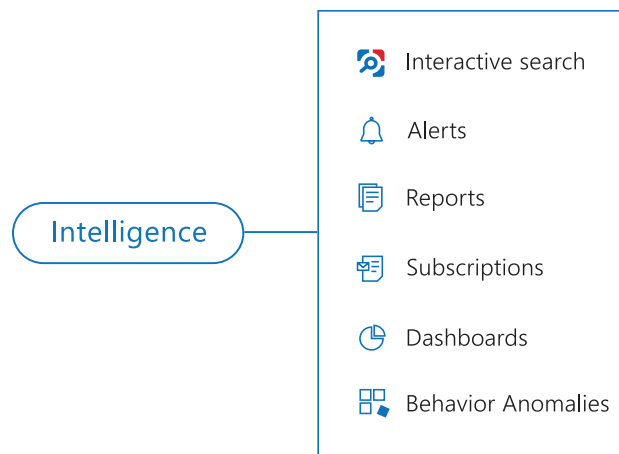
NOTE: Before making any test changes to your environment, ensure that you have the sufficient rights, and that the changes conform to your security policy.

For example, make the following test changes:

- Log on through AD FS
- Perform failed logon attempt through AD FS

7. See How Netwrix Auditor Enables Complete Visibility

After you have made test changes to your environment, you can see how Netwrix Auditor brings security intelligence into your IT infrastructure and enables complete visibility. Take a closer look at the **Intelligence** section. It contains everything you need to enable complete visibility in your environment.



This chapter explains how to review your test changes with some of the Intelligence options and Activity Summary. Review the following for additional information:

- [Review an Activity Summary](#)
- [Review Overview Dashboard](#)
- [Review the All Changes Report](#)
- [Browse Data with Intelligence Search](#)

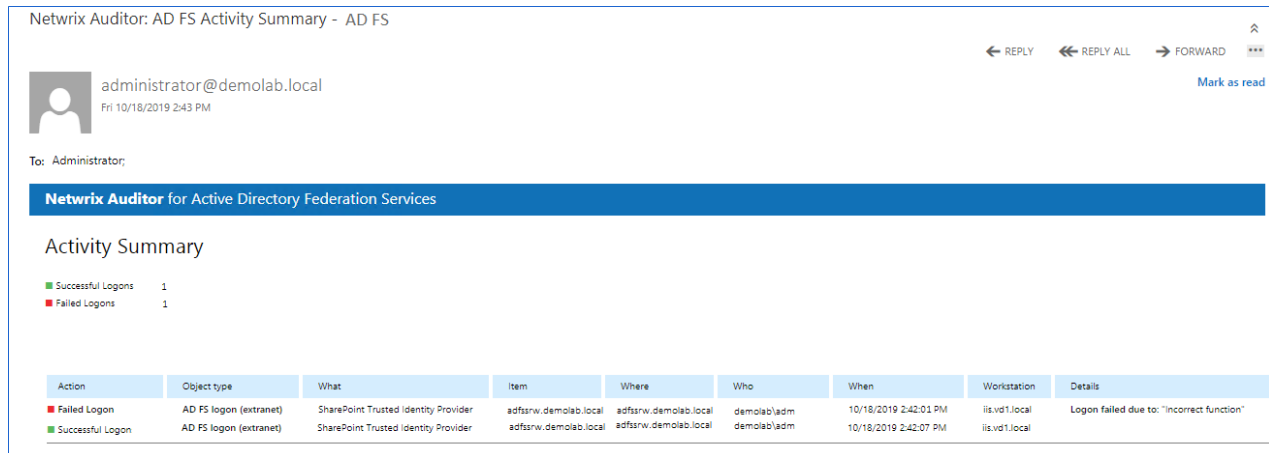
In order not to wait for a scheduled Activity Summary generation, force data collection and email delivery.

1. Navigate to **Monitoring Plans** and select your plan in the list.
2. Click **Edit**.
3. In the your monitoring plan settings, click **Update** in the right pane.
4. Check your mailbox for an email notification and make sure that the data collection has completed successfully.

7.1. Review an Activity Summary

Activity Summary email is generated automatically by Netwrix Auditor and lists all changes that occurred since the last Activity Summary delivery. By default, an Activity Summary is generated daily at 3:00 AM and delivered to the specified recipients.

After the data collection has completed, check your mailbox for an Activity Summary and see how your test changes are reported.



The example Activity Summary provide the following information:

Column	Description
Action	Shows the type of action that was performed on the object.
Object Type	Shows the type of the object.
What	Shows the name of the changed object or its path.
Item	Shows the item associated with the selected monitoring plan.
Where	Shows the name of the server where the change occurred.
Who	Shows the name of the account under which the change was made.
When	Shows the exact time when the change occurred.
Workstation	Shows the of the computer where the user was logged on when the change was made.
Details	Shows the before and after values of the modified object, object attributes, etc.

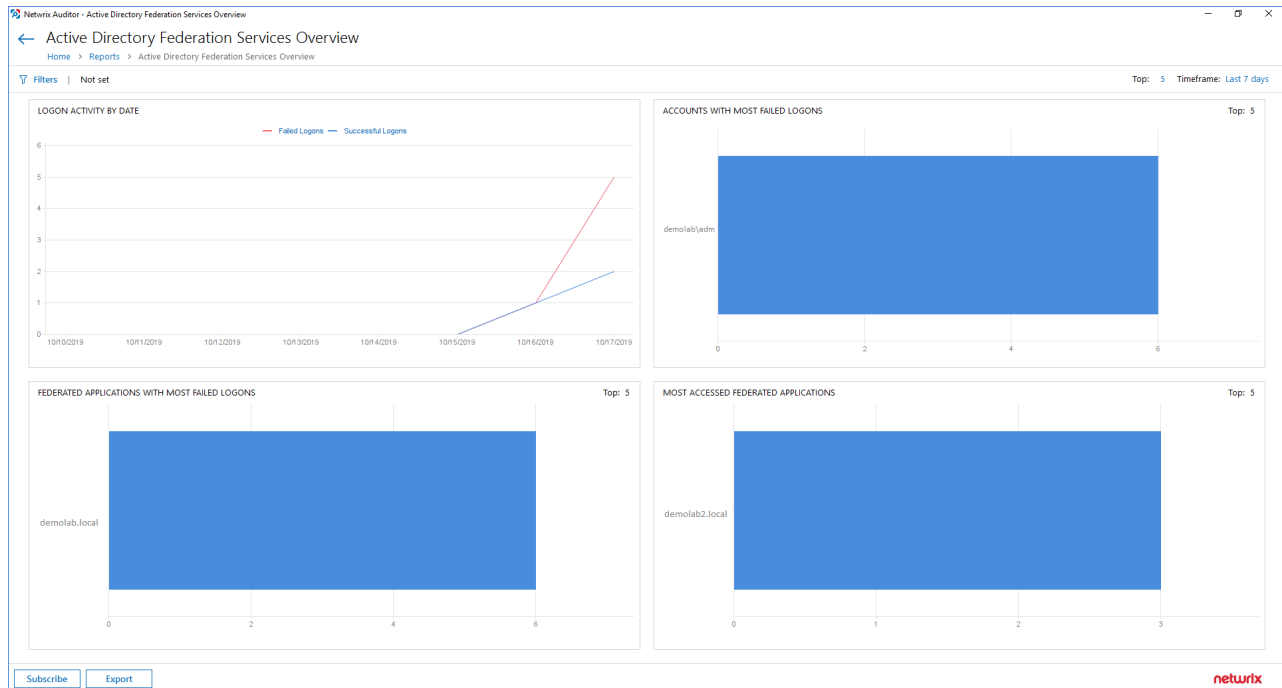
7.2. Review Overview Dashboard

Overview diagram provides a high-level overview of activity trends by date, user, server, object type or data source in your IT infrastructure. The **Overview** diagram aggregates data on all monitoring plans and all data sources, while system-specific diagrams provide quick access to important statistics within one data source.

After collecting initial data, making test changes to your environment and running data collection again, you can get at-a-glance statistics for changes with the **AD FS Overview**.

To see how your changes are reported with AD FS Overview

1. On the main Netwrix Auditor page, navigate to the **Intelligence** section and click the **Reports** tile.
2. Expand the **Predefined** → **Active Directory Federation Services (AD FS)** reports.
3. Select the **Active Directory Federation Services (AD FS) Overview** report and click **View**.
4. Review your changes.
5. Click on any chart to jump to a table report with the corresponding grouping and filtering of data.



7.3. Review the All Changes Report

The Netwrix Auditor client provides a variety of predefined reports that aggregate data from the entire audited IT infrastructure or individual data sources.

Change and activity reports can be found under the **Reports** → **Predefined** → **your data source type** and provide a narrower insight into what is going on in the audited infrastructure and help you stay compliant with various standards and regulations (FISMA, HIPAA, PCI, SOX, etc.).

After collecting initial data, making test changes to your environment and running data collection again, you can take advantage of the reports functionality.

To see how your changes are listed in the report

1. On the main Netwrix Auditor page, navigate to **Reports** → **Predefined** → **your data source**.
2. Select the **Logons through AD FS** report.
3. Click **View** to open the report.

The screenshot shows the Netrix Auditor Search interface. At the top, there's a search bar and navigation tabs: Who, Action, What, When, and Where. Below the search bar, there's a filter section with three filters: Data source (AD FS), Action (Failed Logon), and Operator (Successful Logon). The results table shows a list of logon events for 'demo1ab\adm' on 'adfs-primary.rnd.adfs'. The table has columns for Who, Object type, Action, What, Where, When, and Details. The details pane on the right shows activity record details, including data source, monitoring plan, items, workstation, and user account details.

Who	Object type	Action	What	Where	When	Details
demo1ab\adm	AD FS logon (intranet)	Successful Logon	demo1ab	adfs-primary.rnd.adfs	10/17/2019 8:04:36 PM	Activity record details Data source: AD FS Monitoring plan: ADFS_Plan Items: Workstation: Details: Authentication method: Forms Authentication
demo1ab\adm	AD FS logon (intranet)	Successful Logon	demo1ab	adfs-primary.rnd.adfs	10/17/2019 8:04:31 PM	
demo1ab\adm	AD FS logon (intranet)	Failed Logon	demo1ab	adfs-primary.rnd.adfs	10/17/2019 8:04:27 PM	
demo1ab\adm	AD FS logon (intranet)	Successful Logon	demo1ab	adfs-primary.rnd.adfs	10/16/2019 7:25:37 PM	
demo1ab\adm	AD FS logon (intranet)	Failed Logon	demo1ab	adfs-primary.rnd.adfs	10/16/2019 7:25:35 PM	User account details Account: demo1ab\adm

7.4. Browse Data with Intelligence Search

Netrix Auditor delivers complete visibility into your IT infrastructure. Its convenient interactive search interface enables you to investigate incidents and browse data collected across the entire IT infrastructure. When running a search, you are not limited to a certain data source, change type, or object name. You can create flexible searches that provide you with precise results on *who* changed *what*, and *when* and *where* each change was made.

After collecting initial data, making test changes to your environment and running data collection again, you can review changes in details with Intelligence search.

To browse your audit data and see you test changes

1. On the main Netrix Auditor page, navigate to **Intelligence** → **Search**.
2. Add search filters to your search by clicking on a corresponding icon and providing a value. By default, all entries that contain this filter value are shown. For an exact match, use quotation marks.

Filters are used to narrow your search results. To create a unique set of filters, you can:

- Add different filters to your search. Search results will be sorted by all selected filters since they work as a logical conjunction (e.g., **Who: Administrator** AND **Action: Added**).
- Specify several values in the same filter to search for any of them (e.g., **Action: Modified** OR **Action: Removed**). To do this, select a filter again and specify a new value.

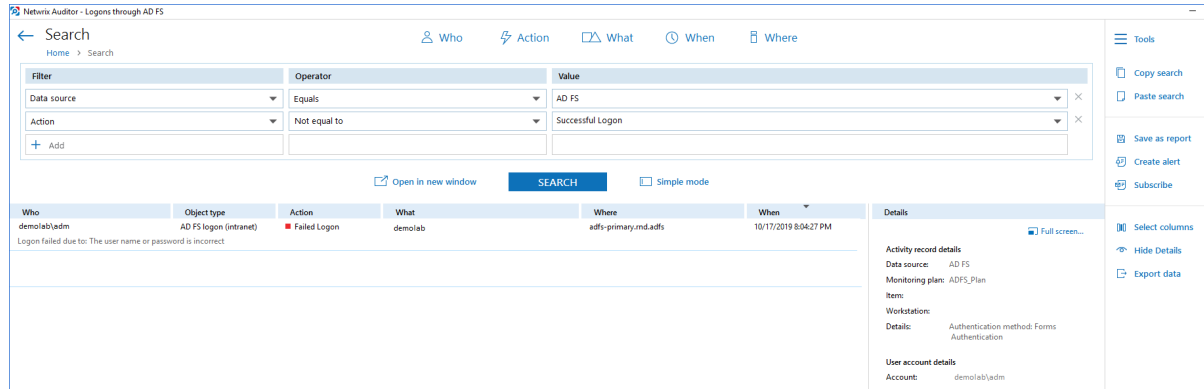
NOTE: Spaces do not separate values, so the whole expression will be included in your search as a single value. For example, if you want to search for any of three names, do not enter *Anna Mark Bill* but instead create a separate filter entry for each name.

NOTE: Refer to [Netrix Online Helpcenter](#) for detailed instructions on how to apply filters and change match types

3. Click **Search**.
4. Now, you can narrow your search and modify it right from the search results pane. Click any entry

that contains excess data, select **Exclude from search** in the **Details** section and specify a filter, e.g., **Action not equal to: Successful logon** to leave information on failed logon attempts only.

Your **Search** field will be updated, the **Action not equal to** filter will be added. Make sure to click **Search** again to update your search results.



5. Having reviewed your search results, navigate to **Tools**.

- Click **Save as report** to save the selected set of filters. This search will be added to the **Custom** section inside **Reports**, so that you will be able to access it instantly. Refer to [Custom Search-Based Reports](#) for detailed instructions on how to create saved searches.
- Click **Create alert** to get instant email or SMS notifications on suspicious activity that matches your current search criteria. You only need to specify a name for a new alert, add recipient and assign a risk score. The selected set of search criteria will be associated with the new alert automatically. Refer to [Alerts](#) for detailed instructions on how to create and configure alerts.

Try making more similar test changes to provoke an alert. For example:

Netrix Auditor Alert: Multiple failed logon attempts using AD FS

adm@demolab.local
Fri 10/18/2019 12:35 PM

To: Administrator;

Netrix Auditor Alert

Multiple failed logon attempts using AD FS

Alerts on multiple failed logon attempts performed using Active Directory Federation Services (AD FS). These attempts may indicate someone is trying to brute force a password. Use this alert to mitigate risks and detect intruders.

The alert was triggered by 5 activity records being captured within 60 seconds. The most recent of those activity records is shown below. To review the full activity trail, use the interactive search in Netrix Auditor.

Who: user@demolab.local
Action: Failed Logon
Object type: AD FS logon (extranet)
What: SharePoint Trusted Identity Provider
When: 10/18/2019 12:33:54 PM
Where: adfssrw.demolab.local
Workstation:
Data source: AD FS
Monitoring plan: Monitoring plan 1
Item: adfssrw.demolab.local
RID: 2019101809351415234FCD72DB8C246ACA183D421A81A4018
Details: Logon failed due to: The user name or password is incorrect
This entry represents 17 matching events occurring within 39 seconds

Once you have received the alert, click the **Behavior Anomalies** tile on the main Netrix Auditor page to see how the product identifies potentially harmful users and displays their risk scores. Drill-down to user profile to review anomalies and mitigate risks. Refer to [Netrix Online Helpcenter](#) for more information on behavior anomalies and risk scores.

Netrix Auditor - WORKSTATIONSQL

← User Profile (vpxuser)
Home > Behavior Anomalies > User Profile (vpxuser)

RISK SCORE TIMELINE
From: 9/27/2017 To: 10/6/2017

9/27/2017 9/28/2017 9/29/2017 9/30/2017 10/1/2017 10/2/2017 10/3/2017 10/4/2017 10/5/2017 10/6/2017

Alert time	Alert name	Risk score	Status
9/29/2017 7:52:36 AM	Program Installation	70	Active

Filters
Customize view
All filters selected
Show reviewed anomalies

Actions
Mark all as reviewed
Refresh

vpuser
Total risk score: 70
Show user activity

8. Related Documentation

The table below lists all documents available to support Netwrix Auditor for Active Directory Federation Services:

Document	Description
Netwrix Auditor Online Help Center	Gathers information about Netwrix Auditor from multiple sources and stores it in one place, so you can easily search and access any data you need for your business. Read on for details about the product configuration and administration, its security intelligence features, such as interactive search and alerts, and Integration API capabilities.
Netwrix Auditor Installation and Configuration Guide	Provides detailed instructions on how to install Netwrix Auditor, and explains how to configure your environment for auditing.
Netwrix Auditor Administration Guide	Provides step-by-step instructions on how to configure and use the product.
Netwrix Auditor Intelligence Guide	Provides detailed instructions on how to enable complete visibility with Netwrix Auditor interactive search, report, and alert functionality.
Netwrix Auditor Integration API Guide	Provides step-by-step instructions on how to leverage Netwrix Auditor audit data with on-premises and cloud auditing solutions using RESTful API.
Netwrix Auditor Release Notes	Lists the known issues that customers may experience with Netwrix Auditor 9.9, and suggests workarounds for these issues.