

HOW TO CONFIGURE NETWRIX FILE SERVER CHANGE REPORTER TO MONITOR EMC VNX / VNXE / CELERRA CIFS SHARES

TECHNICAL ARTICLE

April/2012

Legal Notice

The information in this publication is furnished for information use only, and does not constitute a commitment from NetWrix Corporation of any features or functions discussed. NetWrix Corporation assumes no responsibility or liability for the accuracy of the information presented, which is subject to change without notice.

NetWrix is a registered trademark of NetWrix Corporation. The NetWrix logo and all other NetWrix product or service names and slogans are registered trademarks or trademarks of NetWrix Corporation. Active Directory is a trademark of Microsoft Corporation. All other trademarks and registered trademarks are property of their respective owners.

Disclaimers

This document may contain information regarding the use and installation of non-NetWrix products. Please note that this information is provided as a courtesy to assist you. While NetWrix tries to ensure that this information accurately reflects the information provided by the supplier, please refer to the materials provided with any non-NetWrix product and contact the supplier for confirmation. NetWrix Corporation assumes no responsibility or liability for incorrect or incomplete information provided about non-NetWrix products.

© 2012 NetWrix Corporation.

All rights reserved.

www.netwrix.com

Table of Contents

| | |
|--|-----------|
| 1. INTRODUCTION | 4 |
| 1.1. Overview | 4 |
| 1.2. How This Guide is Organized | 4 |
| 2. CONFIGURING EMC VNX/VNXE/CELERRA CIFS AUDITING | 5 |
| 2.1. Configuring Audit Object Access Policy | 5 |
| 2.2. Configuring the Security Log | 5 |
| 3. CONFIGURING AUDIT SETTING FOR THE CIFS FILE SHARES | 6 |
| 4. CONFIGURING NETWRIX FILE SERVER CHANGE REPORTER..... | 8 |
| A APPENDIX: SUPPORTING DATA | 10 |
| A.1 Related Documentation | 10 |

1. INTRODUCTION

1.1. Overview

This article is intended to help you configure NetWrix File Server Change Reporter and set up reporting on modifications and access events to the files, folders and shares of your EMC VNX/VNXe/Celerra® appliance.

NetWrix File Server Change Reporter supports auditing of EMC VNX/VNXe/Celerra CIFS shares since version 2.0. If you are running an older version, you can download the latest product edition from [NetWrix File Server Change Reporter website page](#).

Note: EMC VNX/VNXe/Celerra is only configurable and available in the NetWrix File Server Change Reporter Standard configuration mode of the Enterprise Edition.

1.2. How This Guide is Organized

This section explains how this guide is organized and provides a brief overview of each chapter.

- Chapter [1 Introduction](#): the current chapter. It explains the purpose of this document and outlines its structure.
- Chapter [2 Configuring EMC VNX/VNXe/Celerra CIFS Auditing](#): provides instructions on how to configure the Audit Object Access Policy and the security event log for EMC VNX/VNXe/Celerra.
- Chapter [3 Configuring Audit Setting for the CIFS File Shares](#): explains how to configure audit settings for the CIFS file shares.
- Chapter [4 Configuring NetWrix File Server Change Reporter](#): provides instructions on how to configure NetWrix File Server Change Reporter to monitor an EMC VNX/VNXe/Celerra appliance.
- [Appendix: Supporting Data](#): lists all documentation published to support NetWrix File Server Change Reporter.

2. CONFIGURING EMC VNX/VNXE/CELERRA CIFS AUDITING

This section explains how to configure an EMC VNX/VNXe/Celerra appliance for audit by NetWrix File Server Change Reporter.

2.1. Configuring Audit Object Access Policy

To monitor an EMC VNX/VNXe/Celerra appliance with NetWrix File Server Change Reporter, you must set 'Audit object access' to Success and/or Failure in the Group Policy of the OU which your EMC VNX/VNXe/Celerra appliance belongs to.

Note: For more information on VNX/VNXe/Celerra GPO support, please refer to documentation provided by EMC.

2.2. Configuring the Security Log

To avoid overwriting of the security logs, it is recommended to set security log size to a maximum (4GB).

By default, the security log is set to overwrite events that are older than 10 days, and its size is set to 512 KB. The default location for the security.evt log is C:\security.evt, which corresponds to the root partition of the Data Mover. To be able to increase the security log size, you must move it from the Data Mover root folder. To do this, perform the following procedure:

Procedure 1. To increase security event log maximum size

1. Create a new file system where the security log will be stored.
2. Mount this file system on a mount point, e.g. /events.
3. Make sure that it is accessible via the \\<file_server_name>\C\$\events UNC path.
4. Launch Windows Registry Editor (navigate to **Start** → **Run** and type `regedit`), navigate to **File** → **Connect Network Registry...** and specify the file server name.
5. Navigate to HKEY_LOCAL_MACHINE\SYSTEM\CurrentControlSet\Services\EventLog\Security and change the 'File' value to c:\events\security.evt.
6. Change the 'MaxSize' value to 4 000 000 000 (decimal).
7. You may need to restart the corresponding Data Mover for changes to take effect.

Note: Due to Windows Server 2003 limitations, a security log larger than 300 MB cannot be processed. If you wish to set your security event log size to a value that exceeds 300 MB, you must install NetWrix File Server Change Reporter on a machine that runs Windows Server 2008 / 2008 R2 / Windows Vista / Windows 7.

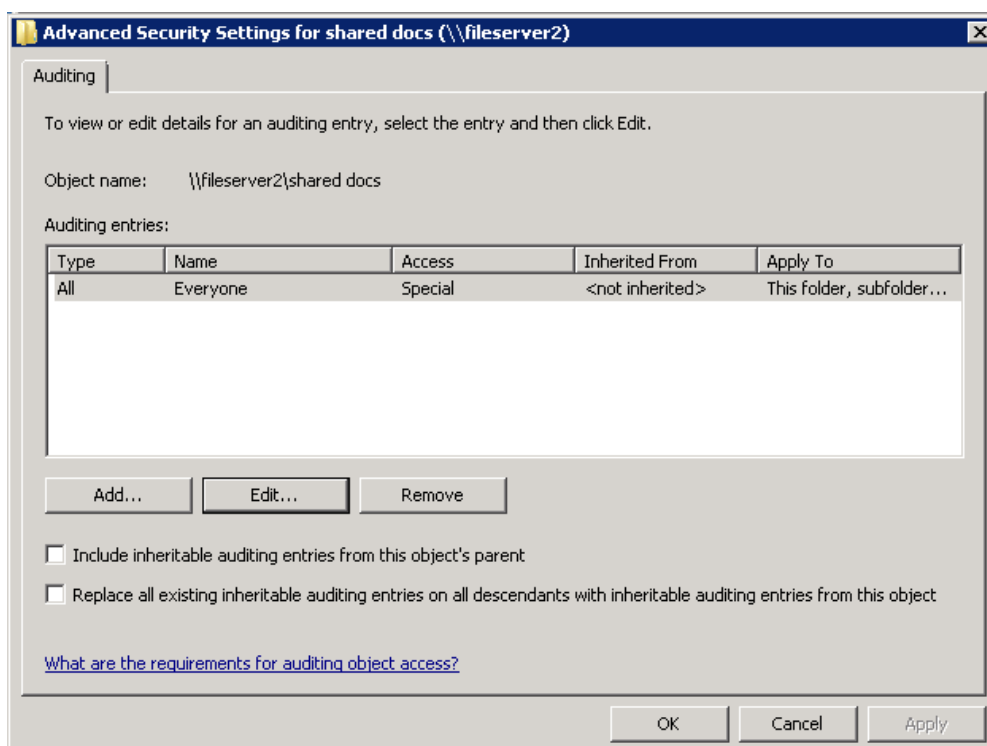
3. CONFIGURING AUDIT SETTING FOR THE CIFS FILE SHARES

To configure audit settings for the CIFS file shares, perform the following procedure on the monitored file share:

Procedure 2. To configure audit settings

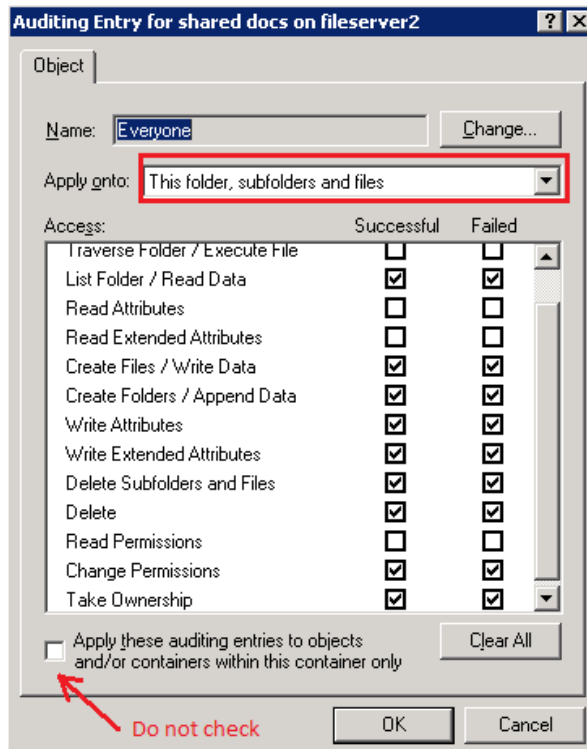
1. Navigate to the root share folder.
2. Right-click it and select **Properties** from the popup menu.
3. Open the **Security** tab.
4. Click the **Advanced** button, and then select the **Auditing** tab.
5. Click **Edit**. The following dialog will be displayed:

Figure 1: Advanced Security Settings



6. Select the 'Everyone' entry, click **Edit** and make sure it is configured as shown in the figure below:

Figure 2: Auditing Entry Configuration



7. Click OK to save the changes.

Note: Paths and screenshots in this procedure apply to Microsoft Windows Server 2008 R2 and may vary slightly for other Windows versions.

4. CONFIGURING NETWRIX FILE SERVER CHANGE REPORTER

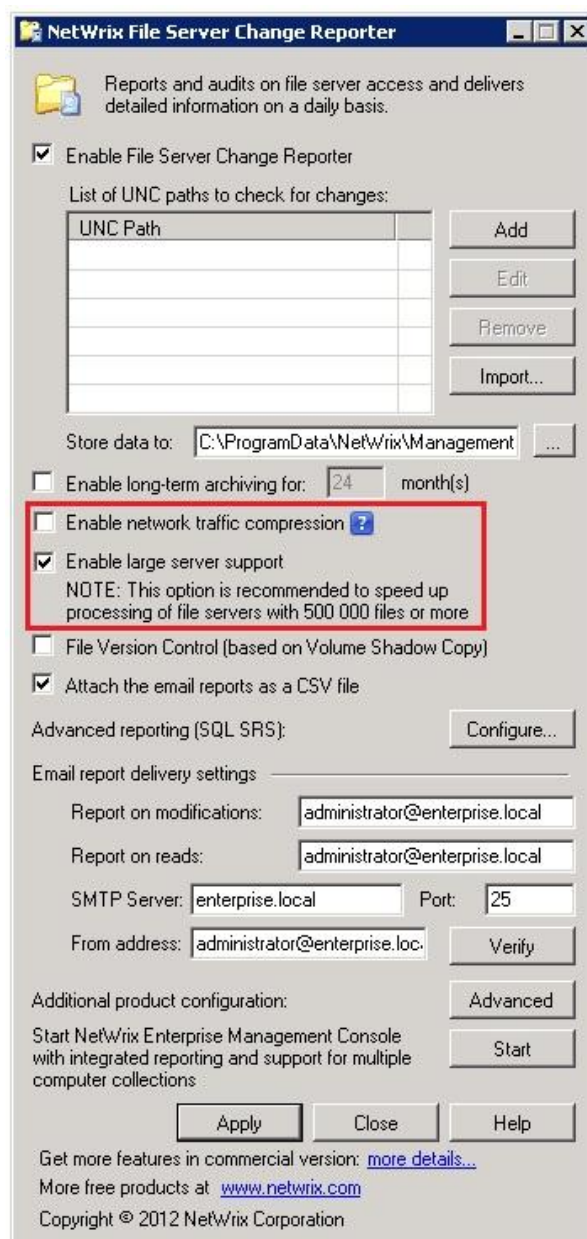
This chapter explains how to configure NetWrix File Server Change Reporter to monitor EMC VNX/VNXe/Celerra CIFS shares.

To do this, perform the following procedure:

Procedure 3. To configure NetWrix File Server Change Reporter

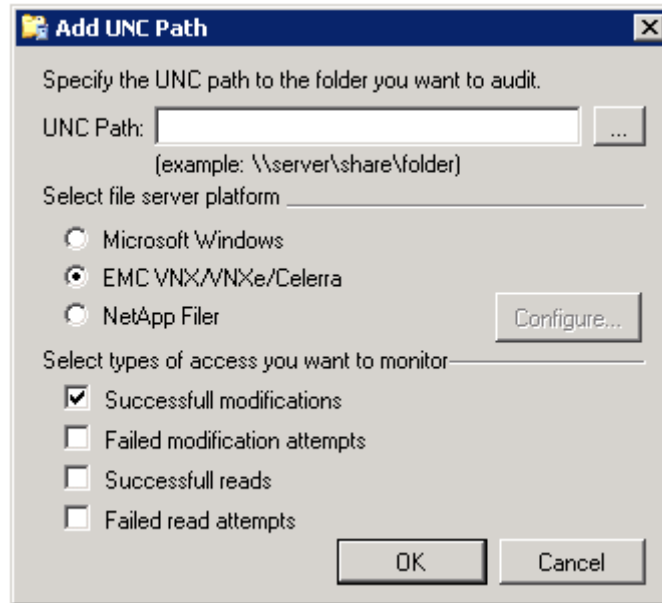
1. Launch NetWrix File Server Change Reporter Standard Configuration Mode (Start → All Programs → NetWrix → File Server Change Reporter → File Server Change Reporter (Standard Edition)).
2. Select the **Enable large server support** option, and deselect the **Enable network traffic compression** option:

Figure 3: NetWrix File Server Change Reporter Standard Configuration Mode



3. Click the **Add** button to add a UNC path. Specify the path and select **EMC VNX/VNXe/Celerra** as the file server platform:

Figure 4: Add UNC Path Dialog



4. Click **OK** to save the changes.

A APPENDIX: SUPPORTING DATA

A.1 Related Documentation

The table below lists all documents available to support NetWrix File Server Change Reporter:

Table 1: Product Documentation

| Document Name | Overview |
|--|---|
| How to Configure NetWrix File Server Change Reporter to Monitor EMC VNX/VNXe/Celerra CIFS Shares | The current article provides detailed instructions on how to configure NetWrix File Server Change Reporter and the EMC VNX/VNXe/Celerra CIFS shares for auditing. |
| NetWrix File Server Change Reporter Administrator's Guide | The guide provides detailed instructions on how to configure and use NetWrix File Server Change Reporter |
| NetWrix File Server Change Reporter Quick Start Guide for the Enterprise Edition | The guide provides instructions on how to start working with the program quickly and easily. |
| NetWrix File Server Change Reporter Quick Start Guide (Freeware Edition) | The document is intended for evaluation of the product Freeware Edition. It provides instructions on how to start working with the program quickly and easily. |
| NetWrix File Server Change Reporter Troubleshooting Guide | The guide provides step-by-step instructions on troubleshooting reporting issues. |
| How to Perform File System Backup and Restore with NetWrix File Server Change Reporter | The technical article provides instructions on how to roll back to a previously saved back-up point using NetWrix File Server Change Reporter. |
| Installing Microsoft SQL Server and Configuring the Reporting Services | The technical article provides instructions on how to install Microsoft SQL Server 2005/2008/2008 R2 Express and configure the Reporting Services. |
| How to Configure NetWrix File Server Change Reporter to Monitor NetApp Filer CIFS Shares | The technical article provides detailed instructions on how to configure NetWrix File Server Change Reporter and NetApp filer CIFS shares for auditing. |
| How to Configure Granular Audit Policy on a File Server Monitored by NetWrix File Server Change Reporter | The technical article provides instructions on how to configure granular Audit policy on a file server monitored by NetWrix File Server Change Reporter. |
| How to Subscribe to SSRS Reports | The article provides step-by-step instructions on how to configure subscription to SSRS reports. |
| Installing SQL Express on Windows Vista Technical Article | Provides detailed instructions on how to install SQL 2005 with Advanced Services on Windows Vista. |
| NetWrix File Server Change Reporter Release Notes | The document provides a list of known issues that customers may experience while using the release version 3.3. |