



PPE / Web

Administrator's Guide

V7.11

© Copyright 1998 - 2021 ANIXIS. All rights reserved.

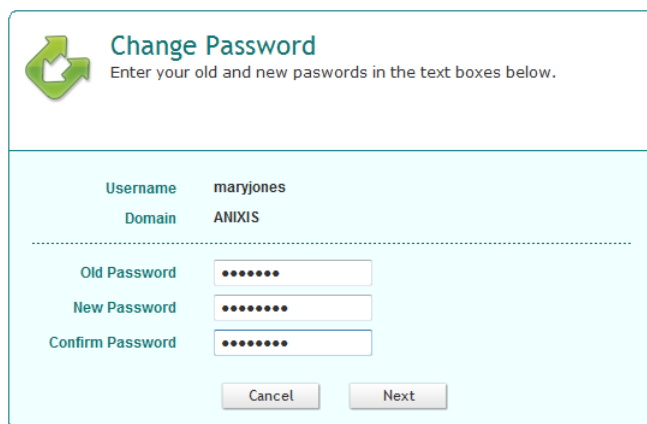
ANIXIS, ANIXIS Password Reset, Password Policy Enforcer, PPE/Web, Password Policy Client, Password Policy Server, and Password Policy Protocol are trademarks of ANIXIS. Microsoft, Windows, Windows Vista, and DirectAccess are registered trademarks of Microsoft Corporation. Other product and company names may be the registered trademarks or trademarks of their respective owners.

Table of Contents

Introduction.....	3
What's New.....	4
Installing PPE/Web.....	6
Preparing IIS.....	7
The PPE/Web Setup Wizard.....	11
Upgrading From PPE/Web V7.x.....	12
Upgrading From PPE/Web V6.x.....	13
Upgrading From PPE/Web V3.x.....	14
Using PPE/Web.....	15
Changing a Password.....	16
Error Messages.....	17
Configuring PPE/Web.....	18
General Tab.....	18
About Tab.....	19
Securing PPE/Web.....	20
Editing the HTML Templates.....	21
Examples.....	22
Replace the ANIXIS Logo	22
Edit Page Instructions	23
Edit Validation Error Messages	23
Edit Critical Error Messages	24
Edit Finished Message	24
Change Font Sizes and Colors	25
Replace URLs to the Welcome Page	25
License Agreement.....	26

Introduction

PPE/Web allows users to change their Windows domain password from a web browser. It can optionally integrate with [Password Policy Enforcer](#) to enforce customizable password policies and help users choose a compliant password.



Change Password
Enter your old and new passwords in the text boxes below.

Username: maryjones
Domain: ANIXIS

Old Password: [masked]
New Password: [masked]
Confirm Password: [masked]

Cancel Next

PPE/Web communicates directly with the domain controllers, so it works best when both the web server and domain controllers are on the same network. If you need to put the web server in a DMZ for extra security, then consider using ANIXIS Password Reset instead of PPE/Web.

ANIXIS Password Reset also allows users to change their password from a web browser, but it has many other features including the ability to work in a DMZ without any domain controllers. Use ANIXIS Password Reset if you need to:

- Allow users to reset a forgotten password or unlock their account by answering questions about themselves, such as their date of birth, first pet's name, etc. Users can access APR from a web browser, or from the Windows Logon and Unlock screens if the APR Client is installed.
- Send e-mail alerts to users whenever their account is used in the password management system.
- Keep a detailed, searchable audit log of all user activity.
- Separate the web server from the internal network for extra security.



Go to www.anixis.com/products/apr/ to learn more about ANIXIS Password Reset.

What's New

User Interface

- Displays a diagnostic message if [Password Policy Enforcer](#) does not respond to a request. This is likely to happen if a domain controller is not running PPE, or if a firewall is blocking access to the PPS port.

Compatibility

- Compatible with Windows Server 2012 and 2012 R2 (as well as Windows Server 2003, 2003 R2, 2008, and 2008 R2).
- Improved Setup Wizard to ensure that PPEWeb.dll is always added to the list of Web Service Extensions on Windows 2003 and 2003 R2 64-bit editions.

Other

- Uses the Password Policy Enforcer V7.x libraries for improved compatibility with new features in recent versions of PPE.
- [Configuration Console](#) prompts for elevation to ensure that user has sufficient permissions to write configuration settings.
- [Imports PPE/Web V6.x configuration settings.](#)



PPE/Web V7.11 integrates with Password Policy Enforcer V7.0 or later. Disable [PPE integration](#) in the PPE/Web Configuration console if you need to use PPE/Web with an older version of PPE.

New in PPE/Web V6.x (Previous Version)

User Interface

- Updated HTML templates allow [customization](#) of all user interface elements, including error messages.
- The [Password Policy Enforcer](#) policy message is now shown during password changes. Earlier versions of PPE/Web had this message hard-coded in the HTML template.
- A [Configuration console](#) to configure system settings and install license keys.
- The [Setup Wizard](#) installs and configures PPE/Web without the manual setup steps from earlier versions.

Compatibility

- Compatible with Windows Server 2008 and 2008 R2 (as well as Windows Server 2003 and 2003 R2).
- Compatible with 64-bit and 32-bit Windows editions.

Other

- Additional validation of all user input to improve security.
- Can get user and domain names from [URL parameters](#).
- Uses the Password Policy Enforcer V6.0 libraries for improved compatibility with new features in recent versions of PPE.
- Can be used without Password Policy Enforcer if PPE's additional password policy controls are not needed.



PPE/Web V6.0 integrates with Password Policy Enforcer V6.0 or later.

Installing PPE/Web

PPE/Web V7.11 is designed to run on Windows 2003, 2008, and 2012. Users access PPE/Web from their web browser.

System Requirements

- Windows 2003, 2003 R2, 2008, 2008 R2, 2012 or 2012 R2.
- 5 Megabytes free disk space.
- 5 Megabytes free RAM.



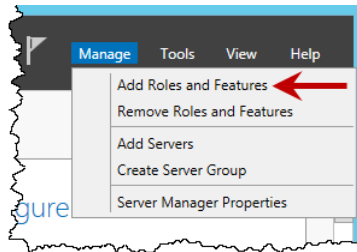
PPE/Web can share server resources with other applications. It can be installed on an existing, well secured web server.

Preparing IIS

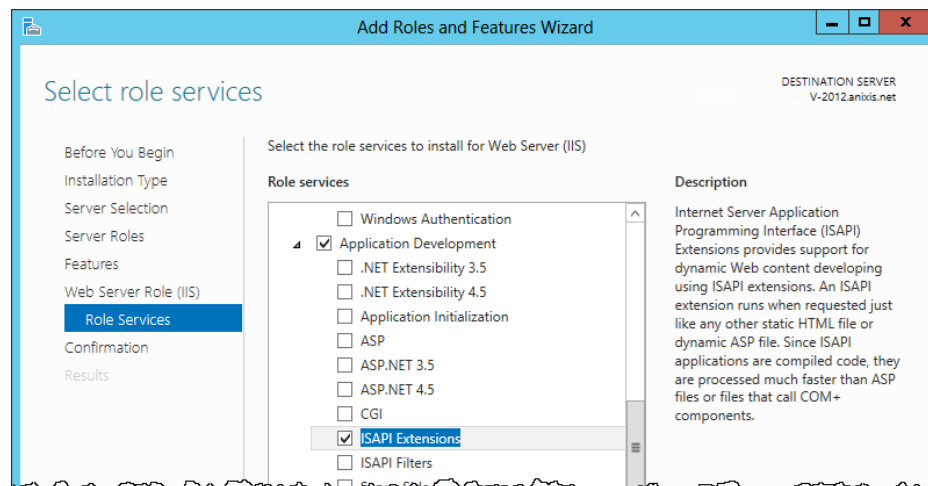
Windows 2008 and 2012 include a modular version of IIS that only has a small set of core features enabled by default. PPE/Web is an ISAPI (Internet Server Application Programming Interface) extension, so you must enable ISAPI extensions on the server that will host PPE/Web.

If IIS is not Installed on Windows 2012

1. Start the Server Manager (ServerManager.exe).



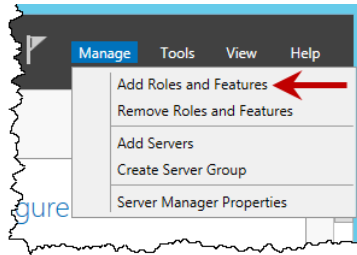
2. Click **Manage > Add Roles and Features**.
3. Click **Next** if you see the "Before You Begin" page.
4. Select **Role-based or feature-based installation**, and then click **Next**.
5. Select your server, and then click **Next**.
6. Select the **Web Server (IIS)** role.
7. Click **Add Features** if asked to install required features.
8. Click **Next** three times.



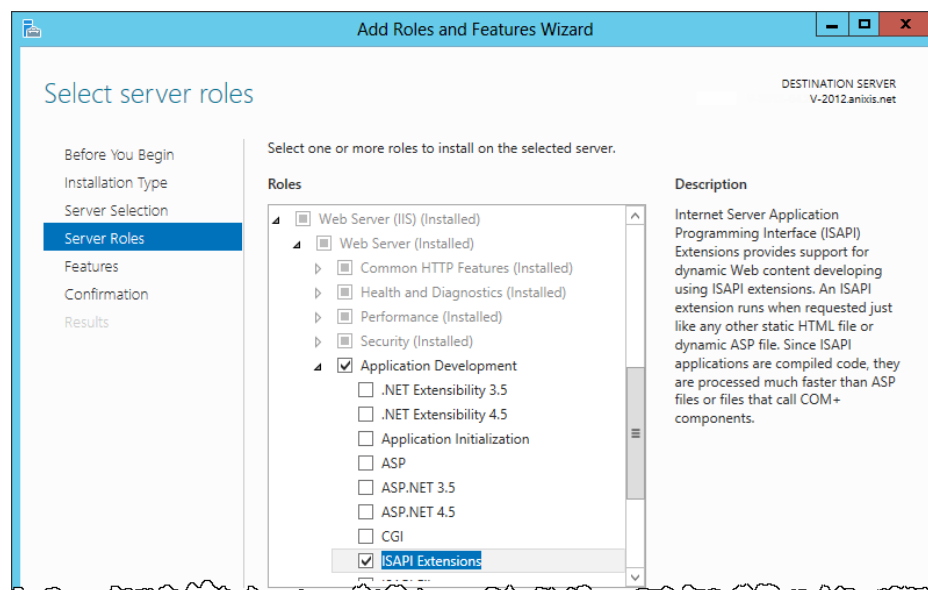
9. Expand the **Application Development** group, then select **ISAPI Extensions**.
10. Click **Next**, and then click **Install**.
11. Wait for IIS to install, and then click **Close**.

If IIS is Already Installed on Windows 2012

1. Start the Server Manager (ServerManager.exe).



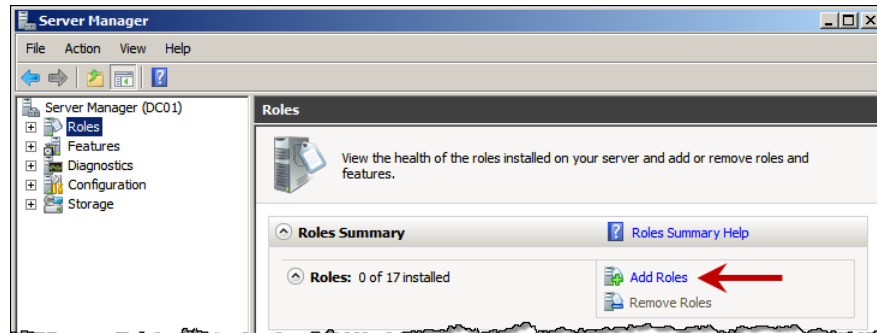
2. Click **Manage > Add Roles and Features**.
3. Click **Next** if you see the "Before You Begin" page.
4. Select **Role-based or feature-based installation**, and then click **Next**.
5. Select your server, and then click **Next**.
6. Expand the **Web Server (IIS) (Installed)** group.
7. Expand the **Web Server (Installed)** group.



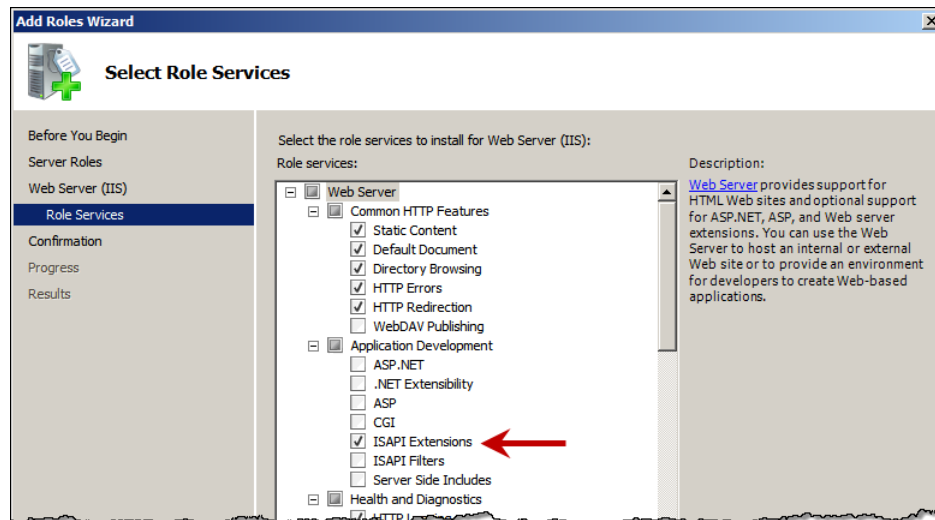
8. Expand the **Application Development** group, then select **ISAPI Extensions**.
9. Click **Next** twice, and then click **Install**.
10. Wait for the ISAPI Extensions feature to install, and then click **Close**.

If IIS is not Installed on Windows 2008

1. Start the Server Manager console (ServerManager.msc).
2. Click the **Roles** item in the left pane.



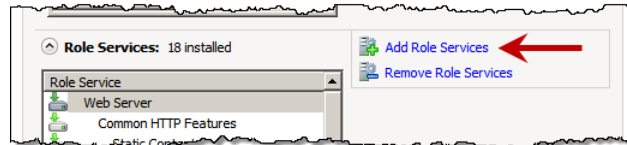
3. Click **Add Roles** in the right pane.
4. Click **Next** if you see the "Before You Begin" page.
5. Select the **Web Server (IIS)** role, and then click **Next** twice.



6. Select **ISAPI Extensions** in the **Application Development** group.
7. Click **Next**, and then click **Install**.
8. Wait for IIS to install, and then click **Close**.

If IIS is Already Installed on Windows 2008

1. Start the Server Manager console (ServerManager.msc).
2. Expand the **Roles** item in the left pane, then click **Web Server (IIS)**.
3. Scroll down to the **Role Services** section in the right pane.



4. Click **Add Role Services**.
5. Select **ISAPI Extensions** in the **Application Development** group.
6. Click **Next**, and then click **Install**.
7. Wait for the role service to install, and then click **Close**.

The PPE/Web Setup Wizard

The Setup Wizard copies the required files onto the server and configures IIS to run the PPE/Web application. To install PPE/Web:

1. Start the PPE/Web Setup Wizard (PPEWeb711.exe).
2. The Setup Wizard may ask you to backup some files if an older version of PPE/Web is detected. Backup these files if you have modified the originals, and then click **Next**.
3. Click **Next**.
4. Read the [license agreement](#). Click **I accept the terms of the license agreement**, and then click **Next** if you accept all the terms.
5. Click **Browse...** if you want to choose a different folder for the PPE/Web documentation and tools, and then click **Next**.
6. Select an **IIS Web Site** from the drop-down list, and optionally change the default **Virtual Directory**. PPE/Web should be installed in its own virtual directory.
7. Click **Next** twice.
8. Wait for PPE/Web to install, and then click **Finish**.

Upgrading From PPE/Web V7.x

Some planning is needed to ensure a smooth upgrade from PPE/Web V7.x. A trial run on a lab network is recommended.

Before You Begin

The HTML templates and associated images are overwritten during an upgrade. You must backup any customized HTML templates and images before upgrading. The HTML templates and images are installed in the `\inetpub\wwwroot\ppeweb\` folder by default.



A full backup of the PPE/Web server is recommended. This allows you to roll back to the previous version if the upgrade cannot be completed.

You may need to restart Windows after upgrading.



PPE/Web V7.11 is only compatible with Password Policy Enforcer V7.0 and later. Upgrade PPE to a compatible version if you have enabled [Password Policy Enforcer integration](#).

Upgrading to V7.11

1. Start the [PPE/Web Setup Wizard](#) and follow the prompts. The Setup Wizard uninstalls the previous version, so there is no need to manually uninstall it.
2. Restore any customized HTML templates and images after upgrading. Do not restore PPEWeb.dll from the backup as it belongs to the previous version.

Upgrading From PPE/Web V6.x

Some planning is needed to ensure a smooth upgrade from PPE/Web V6.x. A trial run on a lab network is recommended.

Before You Begin

The HTML templates and associated images are overwritten during an upgrade. You must backup any customized HTML templates and images before upgrading. The HTML templates and images are installed in the `\inetpub\wwwroot\ppeweb\` folder by default.



A full backup of the PPE/Web server is recommended. This allows you to roll back to the previous version if the upgrade cannot be completed.

You may need to restart Windows after upgrading.



PPE/Web V7.11 is only compatible with Password Policy Enforcer V7.0 and later. Upgrade PPE to a compatible version if you have enabled [Password Policy Enforcer integration](#).

Upgrading to V7.11

1. Start the [PPE/Web Setup Wizard](#) and follow the prompts. The Setup Wizard uninstalls the previous version, so there is no need to manually uninstall it.
2. Restore any customized HTML templates and images after upgrading. Do not restore PPEWeb.dll from the backup as it belongs to the previous version.
3. Open the [Configuration console](#) to import your PPE/Web V6.x configuration settings. You will also need to [install your new license key](#) if you have a perpetual license.

Upgrading From PPE/Web V3.x

PPE/Web V3.x did not include a Setup Wizard, so you should manually remove the old version before upgrading.

Removing PPE/Web V3.x

1. Open the IIS Manager console.
2. Right-click the **PPE/Web** virtual directory in the left pane of the IIS Manager console, and then click **Delete**. Click **Yes** to confirm.
3. Click the **Web Service Extensions** item in the left pane of the IIS Manager console. Right-click the **PPE/Web** item in the right pane, and then click **Delete**. Click **Yes** to confirm.
4. Backup the PPE/Web V3.x files. These are most likely in the `\inetpub\wwwroot\ppeweb\` folder.
5. Delete the folder containing the PPE/Web V3.x files.

Upgrading to V7.11

1. Start the [PPE/Web Setup Wizard](#) and follow the prompts.
2. Open the [Configuration console](#) to configure PPE/Web and [install your new license key](#).

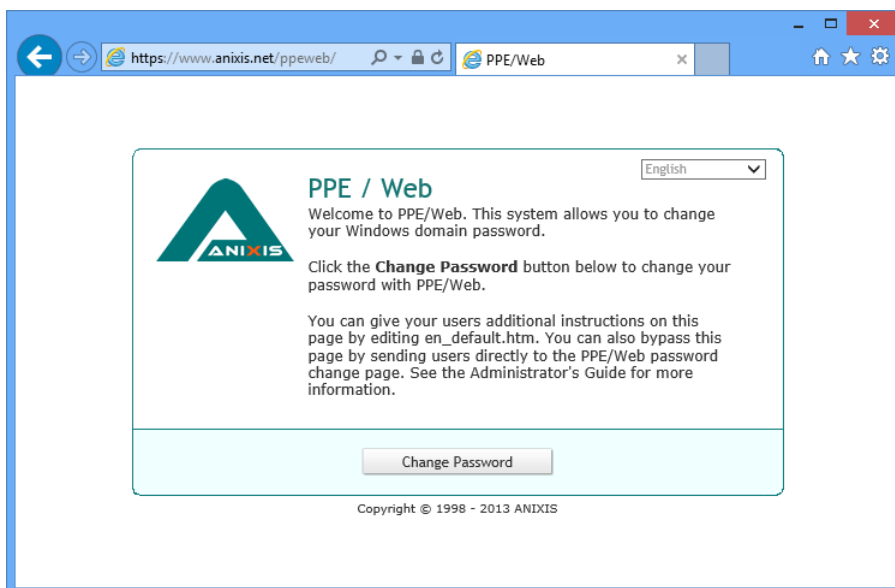


Any customizations to the PPE/Web V3.x user interface will need to be [recreated](#) after upgrading to PPE/Web V7.11.

Using PPE/Web

The default URL for PPE/Web is: `http://[server]/ppeweb/`

Where [server] is the name or IP address of the server hosting PPE/Web.



The default page is called the Welcome page. You can customize the information on this page by editing `en_default.htm`, or you can bypass this page and send users directly to the [Password Change](#) page:

`http://[server]/ppeweb/ppeweb.dll`

You can also include the username and/or domain in the URL:

`http://[server]/ppeweb/ppeweb.dll?username=maryjones&domain=ANIXIS`



[Install an SSL certificate](#) on the web server and use the HTTPS protocol if PPE/Web will be used on an unencrypted network.

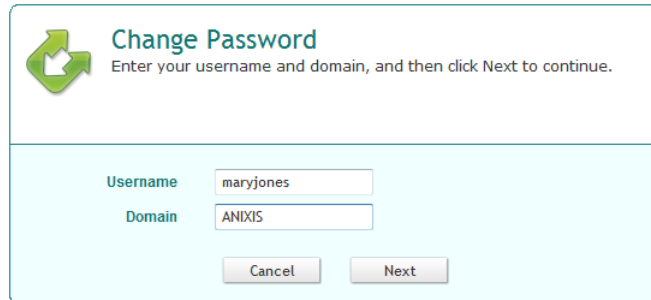


A license reminder message is shown occasionally when PPE/Web is used without a license key. Send an e-mail to support@anixis.com if you would like to evaluate PPE/Web without the reminder message.

Changing a Password

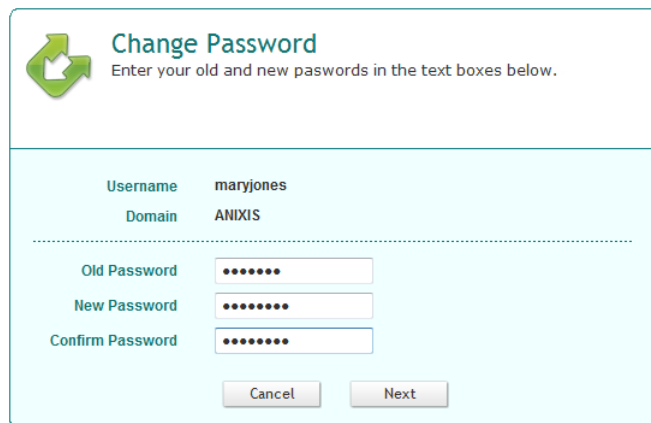
To change a password with PPE/Web:

1. Click **Change Password** on the [Welcome](#) page.



The screenshot shows a web form titled "Change Password" with a green arrow icon. Below the title is the instruction: "Enter your username and domain, and then click Next to continue." The form contains two input fields: "Username" with the value "maryjones" and "Domain" with the value "ANIXIS". At the bottom are "Cancel" and "Next" buttons.

2. Type a **Username** and **Domain**, and then click **Next**.



The screenshot shows the same "Change Password" form, but now the "Username" and "Domain" fields are populated with "maryjones" and "ANIXIS" respectively. Below these fields is a horizontal dashed line. Underneath the line are three password input fields: "Old Password", "New Password", and "Confirm Password", each containing seven dots. "Cancel" and "Next" buttons are at the bottom.

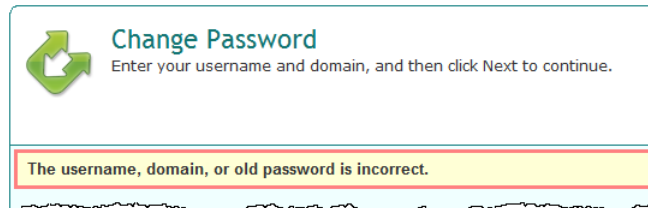
3. Type the **Old Password**, **New Password**, and **Confirm Password**, and then click **Next**.



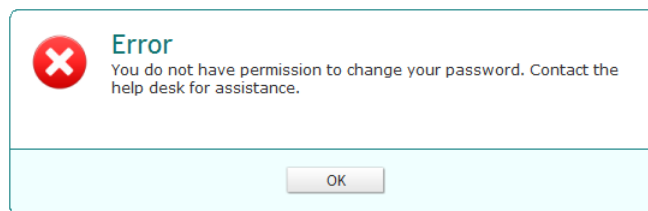
Windows increments the bad password count in Active Directory every time a user enters their **Old Password** incorrectly. This may trigger a lockout if the Windows account lockout policy is enabled.


Error Messages

Validation errors are shown in a yellow box below the page instructions. Validation errors are normally caused by invalid user input. They can often be overcome by changing the value of one or more input fields and resubmitting the form.



Critical errors are shown on their own page. These errors are mostly a result of configuration or system errors. Users can sometimes overcome a critical error by following the instructions in the error message, but most critical errors are beyond the user's control.



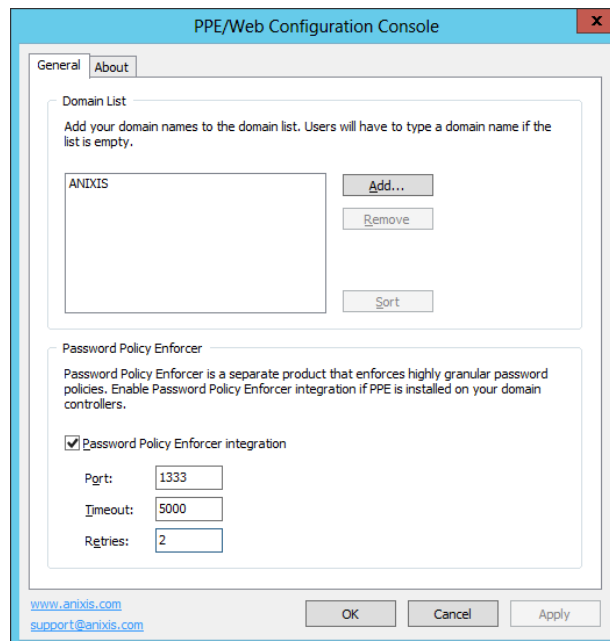
-
-  Validation and critical error messages are stored in the HTML templates. You can modify the default messages by [editing the templates](#).
-

Configuring PPE/Web

Click **Start > [All] Programs > PPE Web > PPE Web Configuration Console** to open the PPE/Web Configuration Console.

General Tab

Use the **General** tab to maintain the list of managed domains, and to configure [Password Policy Enforcer integration](#).



Domain List

When PPE/Web is first installed, the Domain List is empty and users must type their domain name. You can configure PPE/Web to display a list of domains instead of an empty text box. To add a domain to the list:

1. Click **Add...**
2. Type a NetBIOS (NT Compatible) or DNS domain name.
3. Click **OK**, and then click **Apply**.



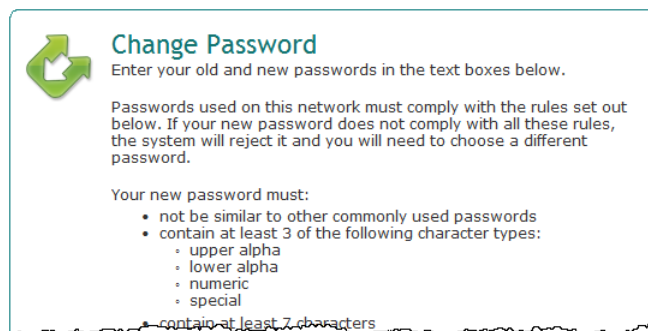
The most frequently used domain should be first in the list as it will be the default. You can rearrange the domains by dragging them to another position. You can also click **Sort** to sort them alphabetically.

To remove a domain from the list:

1. Select the domain name in the Domain List.
2. Click **Remove**, and then click **Yes** when asked to confirm.
3. Click **Apply**.

Password Policy Enforcer

Password Policy Enforcer is a configurable password filter that enforces granular password policies with many advanced features. PPE/Web can integrate with Password Policy Enforcer to help users choose a compliant password.



PPE/Web displays the PPE password policy message when a user is prompted for their new password, and the PPE rejection message if the new password does not comply with the password policy. Select the **Password Policy Enforcer integration** check box if you have installed and configured Password Policy Enforcer on your domain controllers.

You can also set the **Port**, **Timeout**, and number of **Retries** for the Password Policy Protocol if the defaults are not suitable.



A PPE/Web license does not include a Password Policy Enforcer license. Go to www.anixis.com/products/pppe/ to learn more about PPE.

About Tab

The **About** tab contains version and license key information. To install a new license key:

1. Copy the entire license e-mail to the clipboard.
2. Click **Get license from clipboard**.
3. Click **Apply**.

Securing PPE/Web

PPE/Web is designed to operate securely, but you must ensure that the web server is also secure. Follow Microsoft's recommendations to secure the web server, and always install and use an SSL certificate if PPE/Web will be used on an unencrypted network.

Installing and Using an SSL Certificate

PPE/Web sends passwords to the domain controllers over a secure connection, but you need to set up SSL (Secure Sockets Layer) encryption for the connection between the web browser and the web server.



Do not use PPE/Web on a production network without SSL encryption.

You can use a self-signed certificate, but most organizations purchase certificates from a certificate authority. This is a recurring cost, and you will need to complete forms for the certificate authority to verify your identity. You can install PPE/Web on a server that already has an SSL certificate if you would rather not purchase another one.

The IIS documentation explains how request, install, and use SSL certificates. Refer to the documentation for more information:

Windows 2012 & 2008: Configuring Server Certificates in IIS 7
[http://technet.microsoft.com/en-us/library/cc732230\(WS.10\).aspx](http://technet.microsoft.com/en-us/library/cc732230(WS.10).aspx)

Windows 2003: Certificates (IIS 6.0)
<http://www.microsoft.com/technet/prodtechnol/WindowsServer2003/Library/IIS/89c7ef2f-f7d6-483c-8b08-ae0c6584dd4d.mspx>



Ensure that users only access PPE/Web over an encrypted connection after the SSL certificate is installed. The URL should start with https://. Web browsers can be redirected to always use the secure URL.

Editing the HTML Templates

PPE/Web's user interface is built with customizable templates. You can easily modify the user interface by editing the templates.

User Interface Files

PPE/Web installs four .htm files for every language. Each filename starts with a language code. The files for the US English language are:

Filename	Content
en_default.htm	Static HTML for the Welcome page
en_ppeweb.htm	Template for the Password Change page
en_finished.htm	Template for the Finished page
en_error.htm	Template for the Critical Error page

The other user interface files are language independent. Most of the formatting is in ppeweb.css, and some additional CSS for Internet Explorer is in ppeweb_ie.css. The image files are in the images folder. These files are installed into the \inetpub\wwwroot\ppeweb\ folder by default.



Always backup the user interface files before and after editing them. Your changes may be overwritten when PPE/Web is upgraded, and some changes could stop PPE/Web from working correctly.

Web browsers display pages differently, so test your changes with several versions of the most popular browsers to ensure compatibility.

en_default.htm contains static HTML, but the other .htm files contain special comment tags that are used to prepare the pages. Some of these comments define ranges. A range looks like this:

```
<!--RANGE_NAME-->Some text or HTML<!--/RANGE_NAME-->
```

PPE/Web deletes ranges (and the text inside them) when they are not needed. Some ranges span only one word, while others span several lines. The other type of comment tag is called a field.

```
<!--USERNAME-->
```

Fields are replaced by some other information. For example, the field above is replaced with a username.

Resource Strings

Templates end with a resource string section.

```
<!--RESOURCE_STRINGS--><!--
@RES_EMPTY_FIELD_USERNAME:  Enter your username in the Username box.
@RES_EMPTY_FIELD_DOMAIN:    Enter your domain name in the Domain box.
--><!--/RESOURCE_STRINGS-->
```

Resource strings are mostly [validation error messages](#), but they can contain any text PPE/Web may need to build the page. Do not modify the identifiers on the left, only edit the text on the right. Resource strings are always inside a range called RESOURCE_STRINGS. PPE/Web deletes this range before sending the page to the user's web browser.



You may rebrand the PPE/Web user interface, but it is a violation of the [License Agreement](#) to modify, remove or obscure any copyright notice.

Examples

This section contains examples of common customizations. Use these examples to gain a better understanding of PPE/Web's templates. You don't need to be an expert in HTML to follow these examples, but a basic understanding of HTML will help. Work through them carefully, and backup files before you edit them. The examples in this section are from the US English files, but the format is the same for all languages.

Replace the ANIXIS Logo

The ANIXIS logo is shown in the top left corner of the [Welcome](#) page. The logo is installed into the \inetpub\wwwroot\ppeweb\images\ folder by default, and it is called logo.gif. You can replace this file with one containing your organization's logo.

Your logo may appear distorted if it is not the same size as the ANIXIS logo. You can fix this by opening en_default.htm in a text editor such as Notepad. Search for the line shown below, and replace the width (116) and height (69) with the dimensions of your logo in pixels.

```

```

Edit Page Instructions

Instructions appear at the top of the [Password Change](#) page in the white section above the input fields. You can edit these instructions by opening `en_ppweb.htm` and searching for the text you wish to modify.

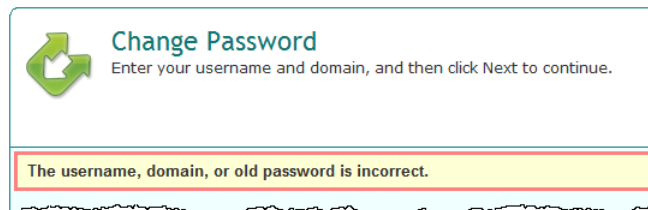
Instructions are inside ranges called SECTION_A and SECTION_B. Each section contains the instructions for a page in the template. Make sure you edit the instructions in the correct section, or they may be displayed on the wrong page.

```
<!--SECTION_A-->
    <p>Enter your username and domain, and then click Next to continue...
<!--/SECTION_A-->

<!--SECTION_B-->
    <p>Enter your old and new passwords in the text boxes below.</p>
<!--/SECTION_B-->
```

Edit Validation Error Messages

Validation error messages are shown in a yellow box below the page instructions. Validation errors are normally caused by invalid user input.

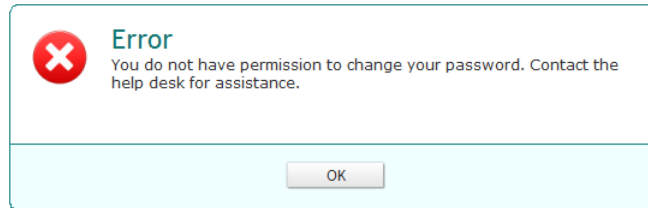


Validation error messages are defined in `en_ppweb.htm`. The error messages are in the [resource strings](#) section near the end of the file.

```
@RES_EMPTY_FIELD_USERNAME:      Enter your username in the Username box.
@RES_EMPTY_FIELD_DOMAIN:       Enter your domain name in the Domain bo...
@RES_BAD_USERNAME_OR_PASSWORD:  The username, domain, or old password i...
```

Edit Critical Error Messages

All the critical error messages are defined in `en_error.htm`. The messages are in the [resource strings](#) section near the end of the file.



You may see placeholders like `%1` and `%2` in some error messages. These are replaced with more information about the error. You should keep these as they provide important information about the error, but you can delete them if you do not want them.

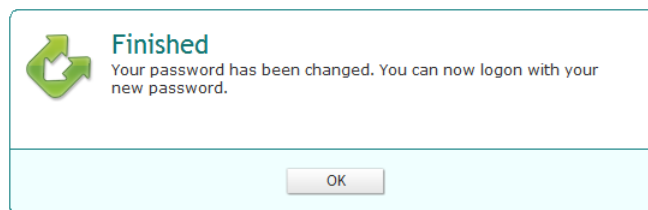
```
@RES_ACCESS_DENIED:      You do not have permission to change your pas...
@RES_ACCOUNT_LOCKED_OUT: Your account is currently locked out. Try aga...
@RES_LICENSE_MISSING:    License reminder. Your password was not chang...
```

If you want to display some text for all error messages, then insert your text above or below the "`<p><!--ERROR--></p>`" line. For example:

```
<p><!--ERROR--></p>
<p>The help desk phone number is 555-555-5555.</p>
```

Edit Finished Message

The finished message is shown after users successfully change their password. This message is defined in `en_finished.htm`.



```
<h1>Finished</h1>
<p>Your password has been changed. You can now logon with your new pass...
```


Change Font Sizes and Colors

ppeweb.css contains most of the user interface formatting information. You can easily change font sizes and colors by editing this file. You can even reposition and resize items, but you will need some understanding of CSS to do this. For example, this is the CSS for the [validation error](#) box:

```
.error {  
    background-color: #ffffd6;  
    border: 3px solid #ff8080;  
    color: #333333;  
    font: bold 1.3em/1.2em Arial, sans-serif;  
    margin: 3px 0 0 4px;  
    padding: 6px 22px 6px 8px;  
    width: 499px;  
}
```

Edit these properties to change the appearance of the error box. You may need to clear your web browser's cache to see the changes.



Web browsers display pages differently, so test your changes with several versions of the most popular browsers to ensure compatibility.

Replace URLs to the Welcome Page

PPE/Web shows the [Welcome](#) page when users click OK or Cancel on the Password Change, Error, and Finished pages. To display a different page when users click OK or Cancel, search for "en_default.htm" (without quotes) in en_ppeweb.htm, en_finished.htm, and en_error.htm and replace en_default.htm with an alternative URL. For example:

```
https://myserver/accounts/login.htm
```

License Agreement

ANIXIS PTY LTD ("ANIXIS") IS WILLING TO LICENSE THIS SOFTWARE ONLY UPON THE CONDITION THAT YOU ACCEPT ALL OF THE TERMS CONTAINED IN THIS SOFTWARE LICENSE AGREEMENT. PLEASE READ THE TERMS CAREFULLY. IF YOU DO NOT AGREE WITH THESE TERMS, THEN ANIXIS IS UNWILLING TO LICENSE THE SOFTWARE TO YOU.

ANIXIS SOFTWARE LICENSE AGREEMENT AND WARRANTY STATEMENT

(End-User Trial Use License With Option For Extended Use/Redistribution Prohibited)

1. The Software.

The Software licensed under this Agreement consists of computer programs, data compilation(s), and documentation referred to as PPE/Web V7.x (the "Software").

2. Trial Use.

You are authorized to use the Software for evaluation purposes during a trial use term of thirty (30) days, unless prior to the expiration of the trial use term this license is terminated by You for convenience or terminated by either party for material breach. You have the option to register for full use of the Software at any time by paying the required license fee. Registration will authorize You to use an unlocking key which will convert the Software to full use, subject to the terms and conditions of this agreement. Your use of the Software under this trial use license for any purpose after the expiration of the initial trial use term is not authorized without the prior written consent of ANIXIS. Upon expiration of the limited trial use term, the Software may automatically disable itself. Immediately upon expiration of the limited trial use term, You shall either register for full use of the Software, or destroy all copies of the Software and documentation.

3. Perpetual Term.

If You purchase a perpetual license, then the term of the license granted herein shall be perpetual unless terminated by You for convenience or terminated by either party for material breach. Immediately upon termination of this license for any reason, You shall destroy all copies of the Software and documentation.

4. Subscription Term(s).

If You purchase a subscription license, then the term of this license is on a subscription basis with an initial term of one (1) year, and optional renewal terms of one (1) year each, unless prior to renewal this license is terminated by You for convenience or terminated by either party for material breach. Renewal procedures are available from ANIXIS, and unless such procedures are strictly satisfied, including the payment of any required license fee, Your use of the Software for any purpose after the expiration of the subscription term is not authorized. Upon expiration of the subscription term, the Software may automatically disable itself. Immediately upon expiration or termination of this license for any reason, You shall destroy all copies of the Software and documentation.

5. License Grant.

You are granted non-exclusive rights to install and use the Software on any computer and/or transmit the Software over a computer network, provided that You acquire and dedicate a licensed copy of the Software for each user who may access the Software. A license for the Software may not be shared or used concurrently by different users. You may purchase additional licenses for the Software from time to time. This Agreement shall take precedence over any purchase order for additional licenses, and any conflicting, inconsistent, or additional terms in such purchase orders shall be null and void. You may copy the Software for archival purposes, provided that all copies must contain the original Software's proprietary notices in unaltered form.

6. Restrictions.

You may not: (i) permit others to use the Software, except as expressly provided above for authorized network use; (ii) modify or translate the Software, except the HTML, CSS, and image files; (iii) reverse engineer, decompile, or disassemble the Software, except to the extent this restriction is expressly prohibited by applicable law; (iv) create derivative works based on the Software; (v) merge the Software with another product; (vi) copy the Software, except as expressly provided above; or (vii) modify, remove or obscure any copyright, trademark or other proprietary rights notices or labels on the Software.

7. Transfers.

You may not transfer the Software or any rights under this Agreement without the prior written consent of ANIXIS, which consent shall not be unreasonably withheld. A condition to any transfer or assignment shall be that the recipient agrees to the terms of this Agreement. Any attempted transfer or assignment in violation of this provision shall be null and void.

8. Ownership.

ANIXIS and its suppliers own the Software and all intellectual property rights embodied therein, including copyrights and valuable trade secrets embodied in the Software's design and coding methodology. The Software is protected by Australian copyright laws and international treaty provisions. This Agreement provides You only a limited use license, and no ownership of any intellectual property.

LIMITED WARRANTY STATEMENT; LIMITATION OF LIABILITY. ANIXIS warrants only to You that the Software shall, in unmodified form, perform substantially in accordance with accompanying documentation under normal use for a period of thirty (30) days from the purchase date. The entire and exclusive liability and remedy for breach of this Limited Warranty shall be, at ANIXIS' option, either (i) return of the amount received by ANIXIS for the Software, or (ii) replacement of defective Software and/or documentation. ANIXIS AND ITS SUPPLIERS AND RESELLERS SPECIFICALLY DISCLAIM THE IMPLIED WARRANTIES OF TITLE, NON-INFRINGEMENT, MERCHANTABILITY, FITNESS FOR A PARTICULAR PURPOSE, SYSTEM INTEGRATION, AND DATA ACCURACY. THERE IS NO WARRANTY OR GUARANTEE THAT THE OPERATION OF THE SOFTWARE WILL BE UNINTERRUPTED OR ERROR-FREE, OR THAT THE SOFTWARE WILL MEET ANY PARTICULAR CRITERIA OF PERFORMANCE, QUALITY, ACCURACY, PURPOSE, OR NEED, EXCEPT AS EXPRESSLY PROVIDED IN THE LIMITED WARRANTY. THIS DISCLAIMER OF WARRANTY CONSTITUTES AN ESSENTIAL PART OF THIS AGREEMENT. NO USE OF THE SOFTWARE IS AUTHORIZED HEREUNDER EXCEPT UNDER THIS DISCLAIMER. No action for the above Limited Warranty may be commenced after one (1) year following the expiration date of the warranty. To the extent that this Warranty Statement is inconsistent with the jurisdiction where You use the Software, the Warranty Statement shall be deemed to be modified consistent with such local law. Under such local law,

certain limitations may not apply, and You may have additional rights which vary from jurisdiction to jurisdiction. For example, some states in the United States and some jurisdictions outside the United States may: (i) preclude the disclaimers and limitations of this Warranty Statement from limiting the rights of a consumer; (ii) otherwise restrict the ability of a manufacturer to make such disclaimers or to impose such limitations; or (iii) grant the consumer additional legal rights, specify the duration of implied warranties which the manufacturer cannot disclaim, or prohibit limitations on how long an implied warranty lasts.

INDEPENDENT OF THE FORGOING PROVISIONS, IN NO EVENT AND UNDER NO LEGAL THEORY, INCLUDING WITHOUT LIMITATION, TORT, CONTRACT, OR STRICT PRODUCTS LIABILITY, SHALL ANIXIS OR ANY OF ITS SUPPLIERS BE LIABLE TO YOU OR ANY OTHER PERSON FOR ANY INDIRECT, SPECIAL, INCIDENTAL, OR CONSEQUENTIAL DAMAGES OF ANY KIND, INCLUDING WITHOUT LIMITATION, DAMAGES FOR LOSS OF GOODWILL, WORK STOPPAGE, COMPUTER MALFUNCTION, OR ANY OTHER KIND OF COMMERCIAL DAMAGE, EVEN IF ANIXIS HAS BEEN ADVISED OF THE POSSIBILITY OF SUCH DAMAGES. THIS LIMITATION SHALL NOT APPLY TO LIABILITY FOR DEATH OR PERSONAL INJURY TO THE EXTENT PROHIBITED BY APPLICABLE LAW.

IN NO EVENT SHALL ANIXIS' LIABILITY FOR ACTUAL DAMAGES FOR ANY CAUSE WHATSOEVER, AND REGARDLESS OF THE FORM OF ACTION, EXCEED THE AMOUNT OF THE PURCHASE PRICE PAID, IF ANY, FOR THE SOFTWARE LICENSE.

EXPORT CONTROLS. You agree to comply with all local laws in Your jurisdiction which might impact Your right to import, export or use the Software, and You represent that You have complied with any regulations or registration procedures required by applicable law to make this license enforceable.

MISCELLANEOUS. This Agreement constitutes the entire understanding of the parties with respect to the subject matter of this Agreement and merges all prior communications, representations, and agreements. This Agreement may be modified only by a written agreement signed by the parties. If any provision of this Agreement is held to be unenforceable for any reason, such provision shall be reformed only to the extent necessary to make it enforceable. This Agreement shall be construed under the laws of the State of New South Wales, Australia, excluding rules regarding conflicts of law. This Agreement will not be governed by the United Nations Convention on Contracts for the International Sale of Goods, the application of which is expressly excluded. The parties have requested that this Agreement and all documents contemplated hereby be drawn up in English. Les parties aux presentes ont exige que cette entente et tous autres documents envisages par les presentes soient rediges en anglais.

U.S. GOVERNMENT END USERS: If the Software and documentation is acquired by or for the United States Government then it is provided with RESTRICTED RIGHTS. Use, duplication, or disclosure by the United States Government is subject to restrictions as set forth in subparagraph (c)(1)(ii) of The Rights in Technical Data and Computer Software clause at DFARS 252.227-7013, or subparagraphs (c)(1) and (2) of the Commercial Computer Software-Restricted Rights at 48 CFR 52.227-19 or clause 18-52.227-86(d) of the NASA supplement to the FAR, as applicable. Manufacturer is ANIXIS PTY LTD, 9 Monterey Terrace, Glenmore Park, NSW 2745 Australia.